

LONDON RESILIENCE

London's Strategic Coordination Arrangements for a Heat Health Emergency

4th July 2019

Toby Gould, Deputy Head of London Resilience

Aim

To raise awareness of how London coordinates the response to a Level 2, 3 or 4 Heat Health Alert

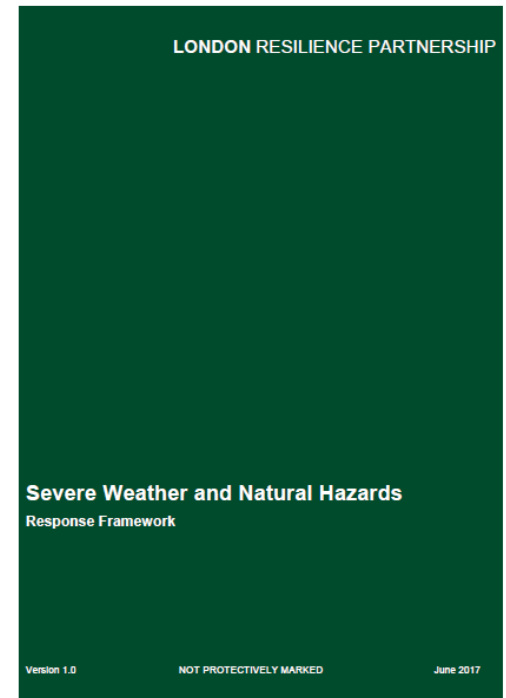


Generic Capabilities

- London Resilience Communication Group EP
- Recovery Coordination
- Humanitarian Assistance
- Scientific & Technical Advice Cell (STAC)

Specific Capabilities

- Severe Weather and Natural Hazards Framework



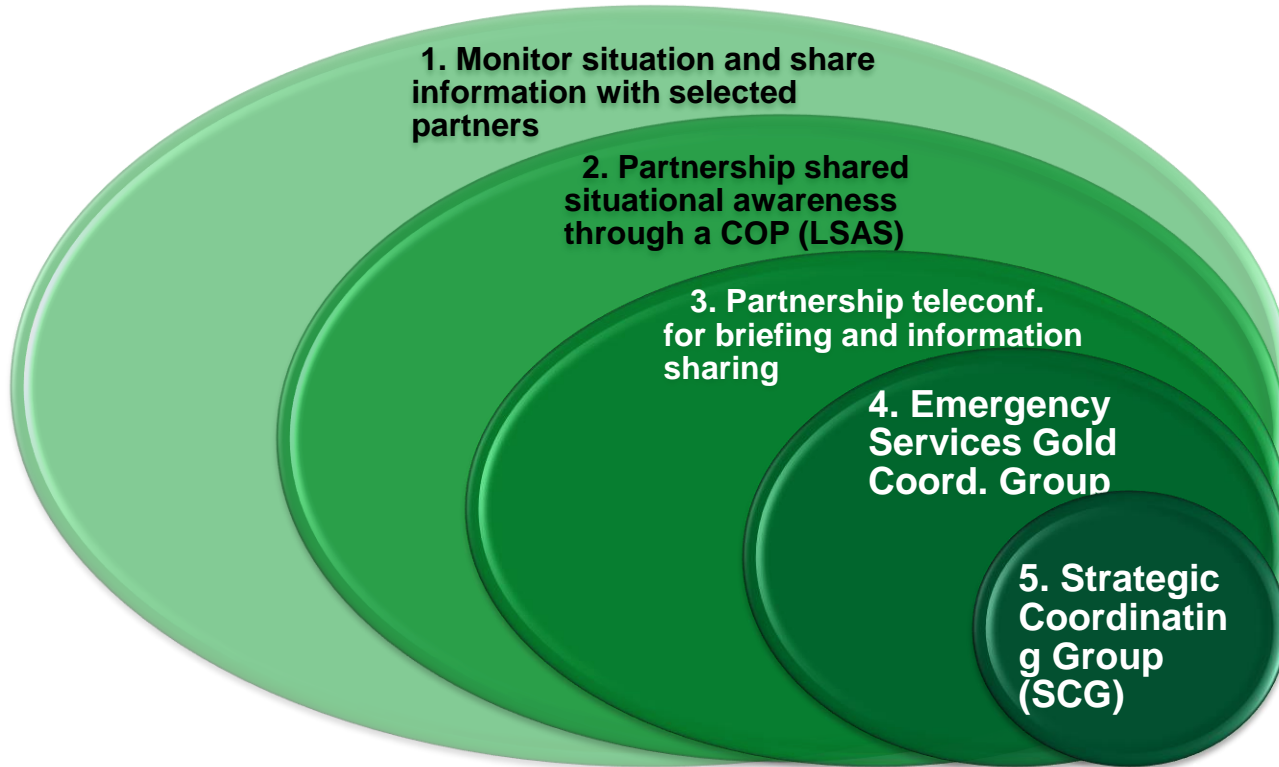
LONDON RESILIENCE

Strategic Coordination
(in general)

Strategic Coordination Protocol

- Escalating strategic coordination arrangements for London
- Deliberately flexible, enabling dynamic decision making based on incident scale, nature and impact
- Complements existing tactical and operational procedures
- Underpins Strategic Coordinating Group arrangements
- Primary focus is to enable the multi-agency management of an incident, including determining a joint strategy

Levels of Coordination



Disruption to London

Media, public or political interest

Complexity of response or variation to planned capability



Strategic Coordinating Group

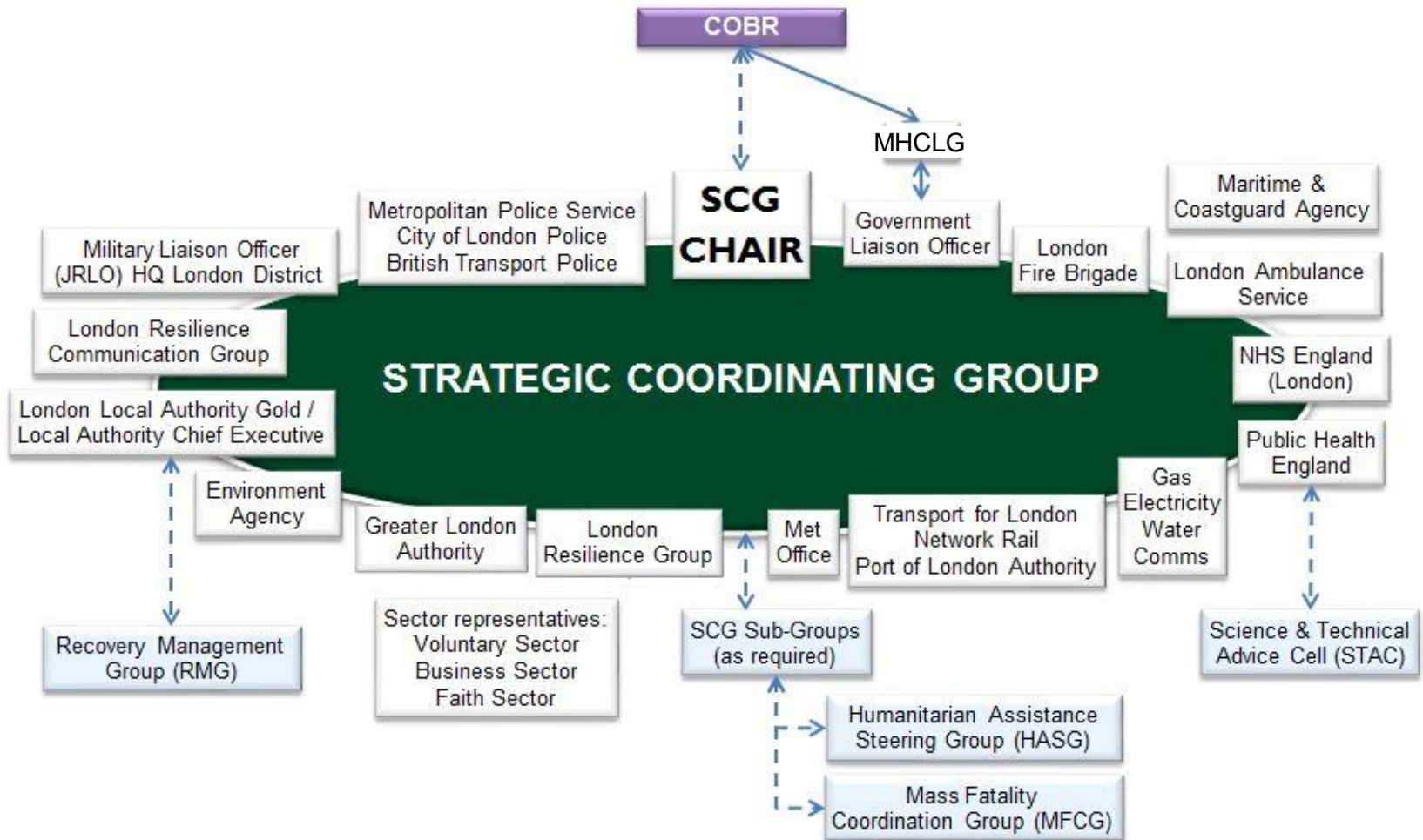
- Responsible for the **strategic aim, objectives and priorities** for London
- Core function is **decision-making**
- By default chaired by MPS during response, then becomes a Recovery Coordinating Group
- Reports to Central Government (COBR) directly and via Government Liaison Officer



Supporting Structures and Partnership Capabilities

- Sub-Groups (e.g. London Resilience Communication Group, Mass Fatalities Coordination Group, Humanitarian Assistance Steering Group, Recovery Coordinating Group)
- Further information on capabilities - Appendix 1 to the Strategic Coordination Protocol

Strategic Coordinating Group



LONDON RESILIENCE

LONDON RESILIENCE

Severe Weather and Natural Hazards Response Framework [Heat Health]

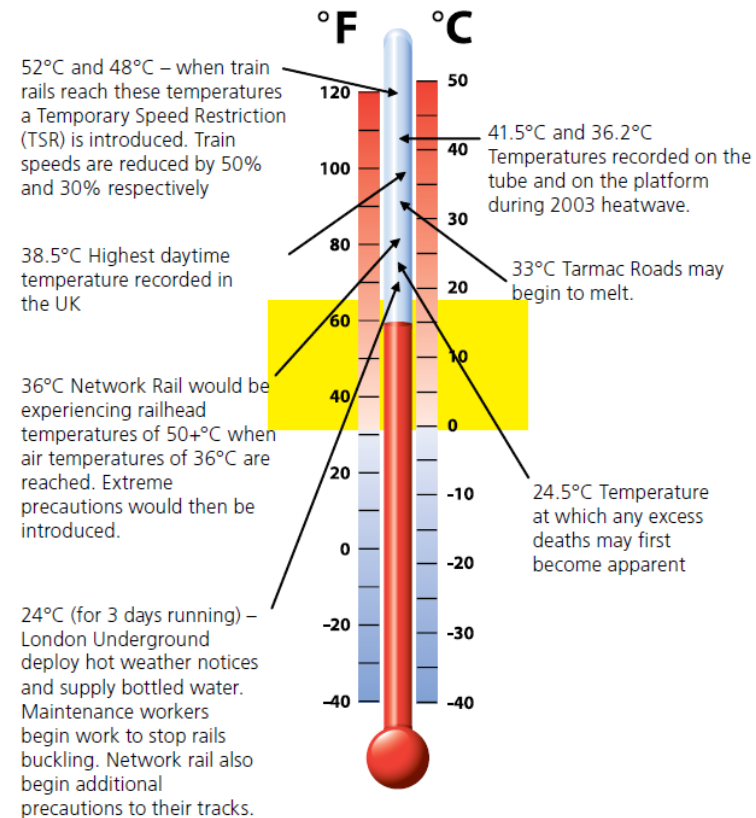
Assumptions

'All partners maintain their own emergency and BC plans which reflect the triggers and actions in this framework'

[and in the Heatwave Plan for England]

- Appropriate action will be taken by frontline services
- In advance (long-term planning) and at all levels 0-4
- BaU arrangements will take care of;
 - long-term planning (level 0)
 - Heatwave and summer preparedness programme (level 1)

Trigger temperatures



Activation triggers – Heat Health Alerts

Coordination / Trigger	Normal Operational Response	Partnership Teleconference	Strategic Coordination Group	Lead for Activation
Flood Guidance Statement	Green bar	Yellow bar	Orange bar	EA / Met Office
Flood Warning Service	Flood Alert (Green bar)	Flood Warning (Yellow bar)	Severe Warning (Red bar)	EA
NSWWS	Green bar	Yellow bar	Orange bar	Met Office
Drought	No Drought (Blue bar)	Developing Drought (Grey bar)	Drought (Grey bar)	EA
Air Quality	Low (Green bar)	Moderate (Yellow bar)	High (Red bar)	Defra / AirText
Daily Hazards Assessment (Space Weather/Volcanic Ash)	Green bar	Yellow bar	Orange bar	Met Office
Heat Health / Cold Weather	Level 1 (Green bar)	Level 2 (Yellow bar)	Level 3 (Orange bar)	Met Office/PHE
			Level 4 (Red bar)	

Level 2: Prepare (heatwave is forecast day 32C, night 18C)

- Partners prepare and report any issues (impact, response) on LSAS
- Consider partnership teleconference, public comms etc.

Level 3: Respond (heatwave action)

- Partnership teleconference, coordinate public comms, ID and support the vulnerable, impact assessment / COP

Level 4: National Strategic response (Major Incident):

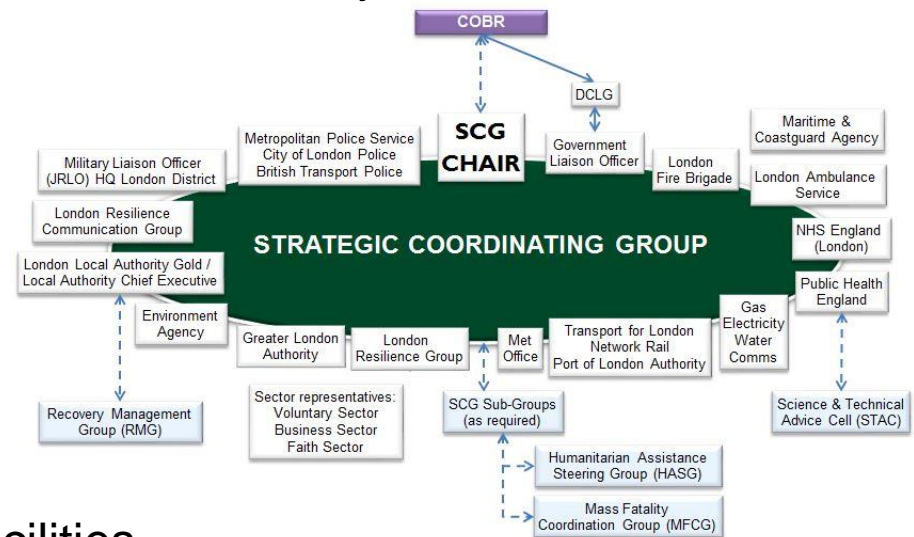
- Strat. Coord. Group (SCG)
- Consider activation of other capabilities (e.g. drought, flood)

Monitoring and Impact Assessment

- PHE monitor data on health impacts from real-time syndromic surveillance systems
- Partners report on impacts and on their response operations:
 - Health and wellbeing (public and staff)
 - Environmental pollution – air and water
 - Air quality – complex relationship heat and air quality
 - Social disorder – sleep, stress, alcohol...
 - Transport infrastructure – roads, rails, other
 - Power supplies – increased demand
 - Water supplies – increased demand, concurrent drought
 - Wildfires
 - Delivery of critical services (incl. death management)

A coordinated response

- SCG - strategy, priorities, decisions, direction (PHE Chair)
- LRCG - public comms and advice (PHE Chair)
- Consequence management / service delivery:
 - Health and Social Care
 - Environmental response
 - Social cohesion / disorder
 - Transport
 - Utilities
 - Fire prevention & response
 - Voluntary, faith, business
 - Community resilience and facilities
- Recovery...



Questions?

Toby Gould

Deputy Head of London Resilience

toby.gould@london-fire.gov.uk

020 8555 1200 ext. 30162

07917 072 548

LondonResilience@london-fire.gov.uk

www.londonprepared.gov.uk

LONDON RESILIENCE GROUP

The London Resilience Group is jointly funded and governed by the Greater London Authority, London Local Authorities and the London Fire Commissioner.

We are hosted by the London Fire Brigade. Our work, and that of the London Resilience Partnership, is overseen by the London Resilience Forum.

LONDON RESILIENCE