

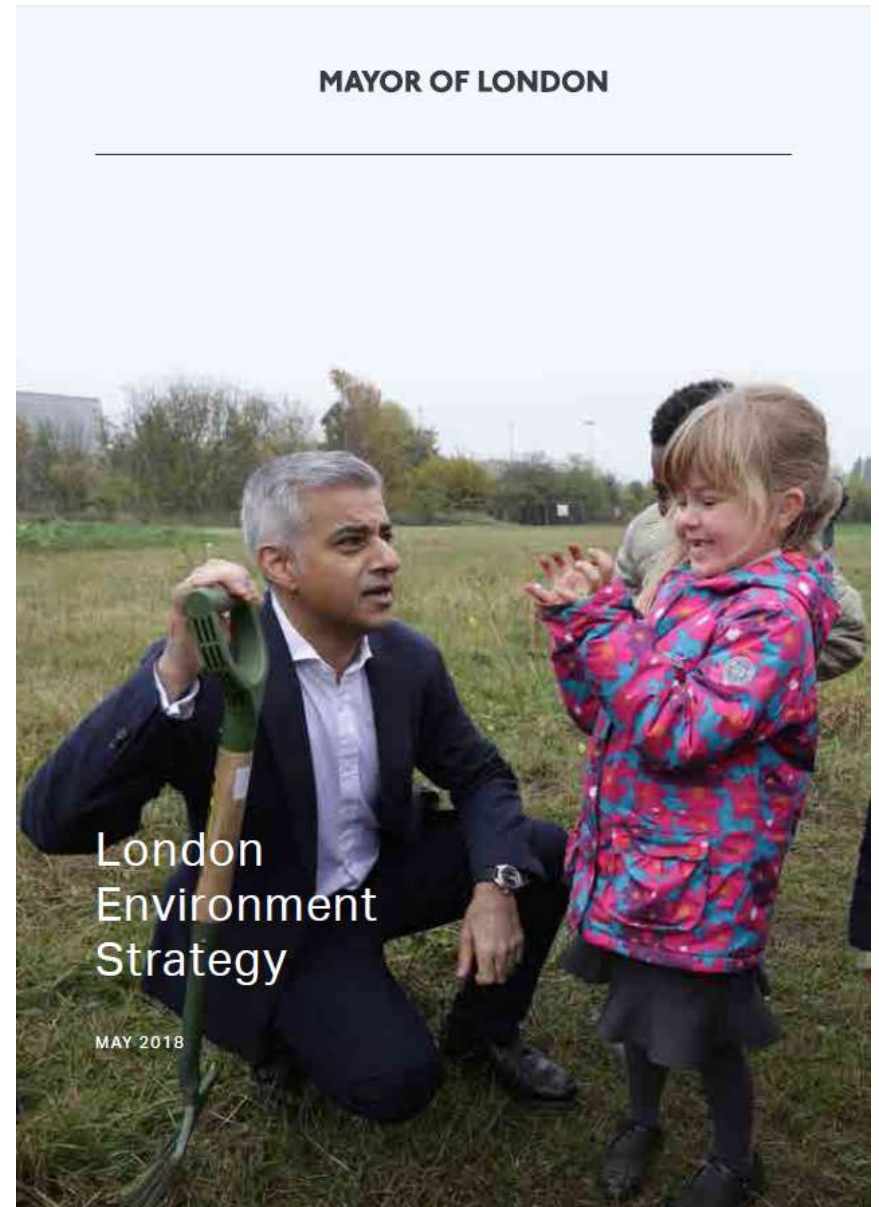
Mitigating and adapting to heat, above and below ground

Dr Katherine Drayson
TfL Principal City Planner -
Environment

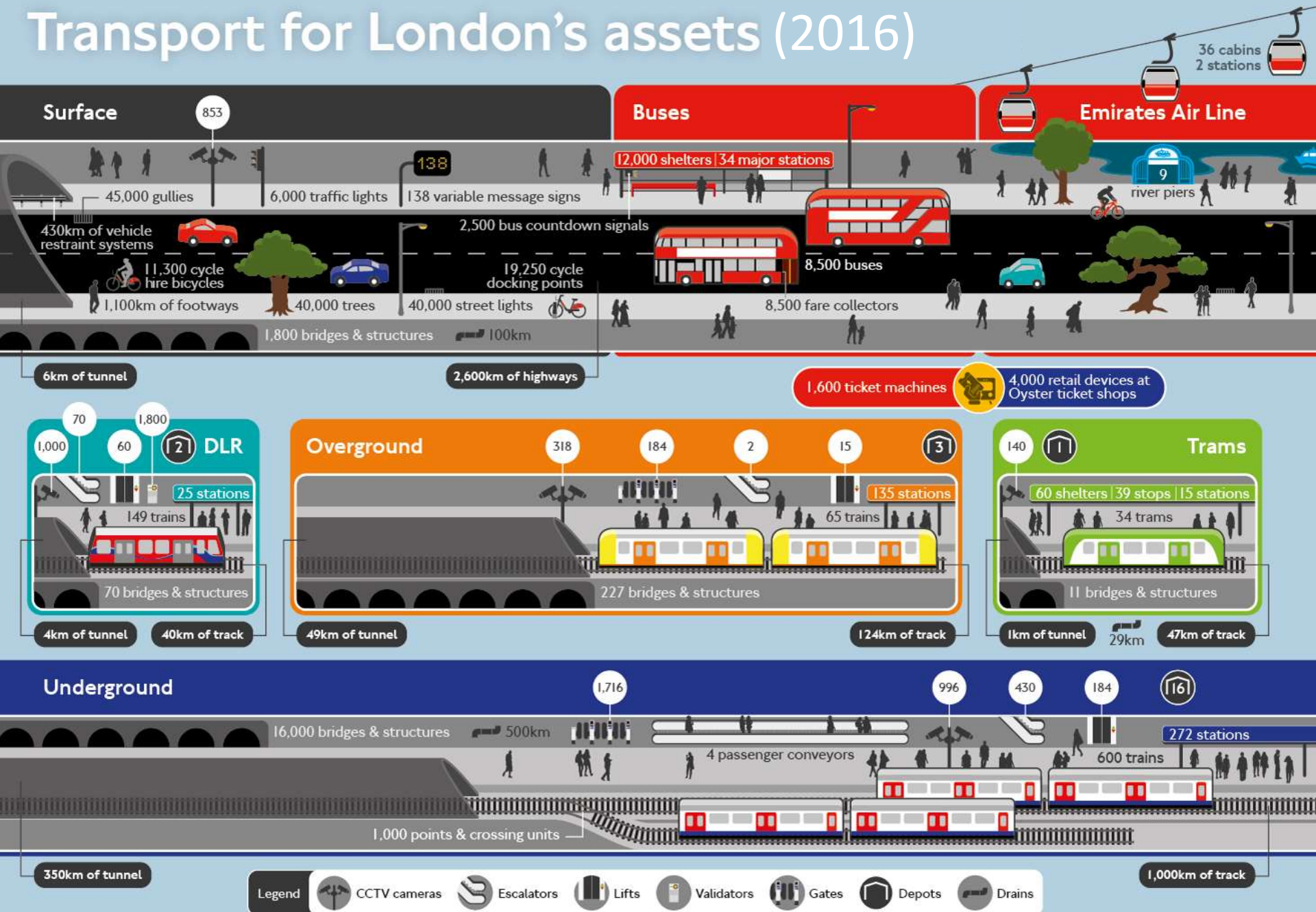


EVERY JOURNEY MATTERS

Context

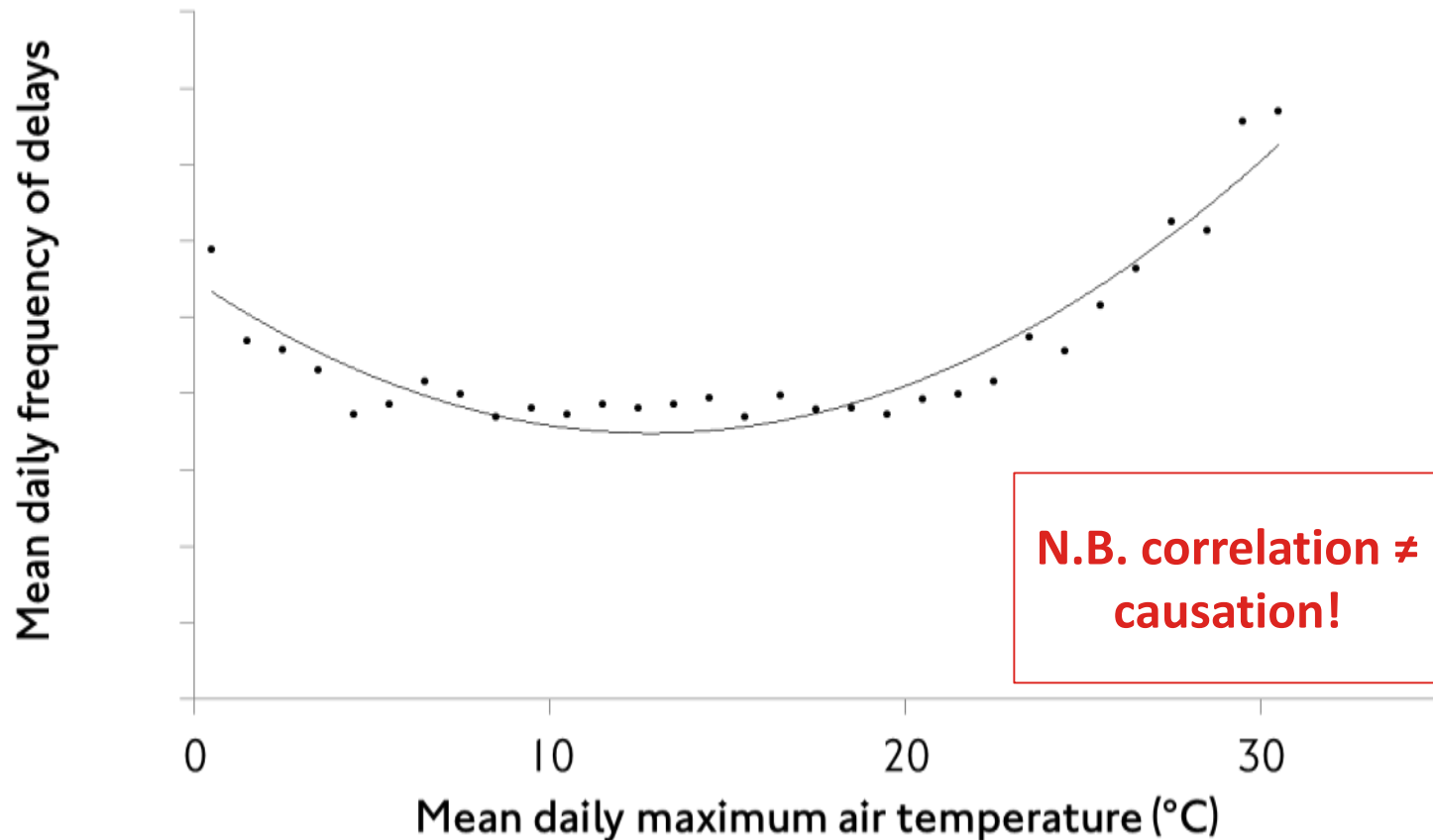


Transport for London's assets (2016)



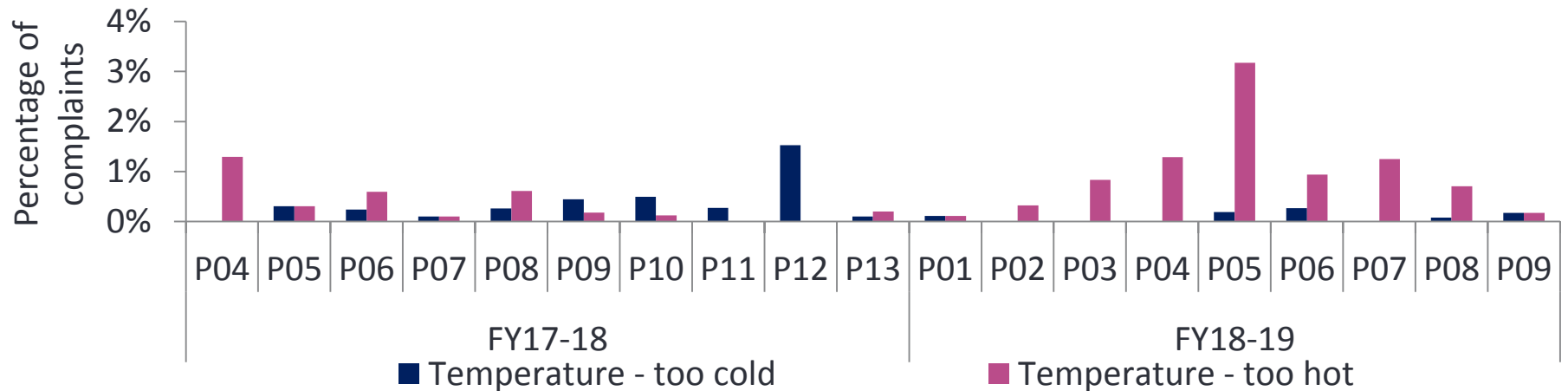
How heat impacts us now - delays

Mean daily frequency of LU delays at given mean daily maximum air temperatures

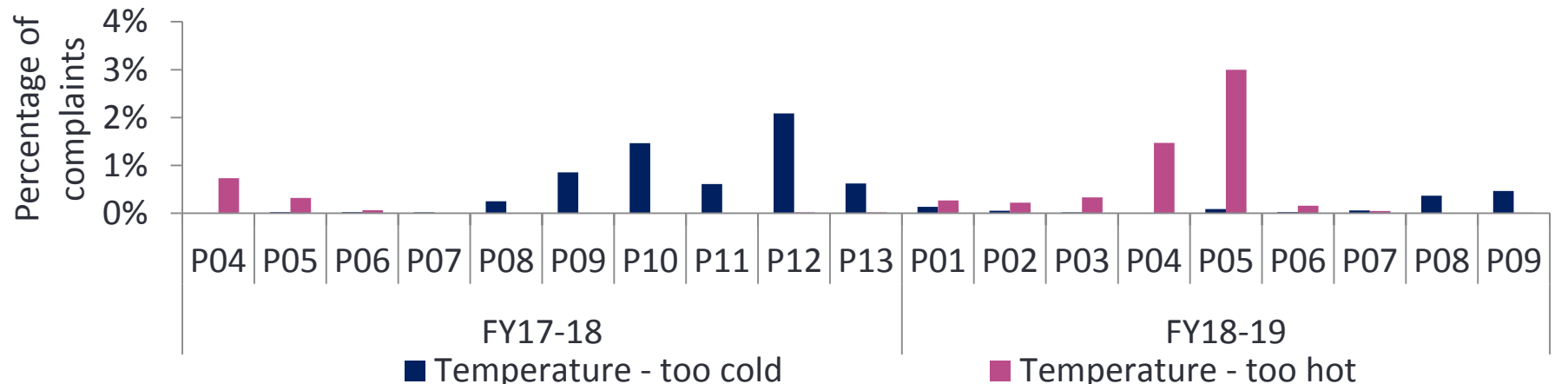


How heat impacts us now – passenger complaints

LU complaints data for financial years 17/18-18/19



Buses complaints data for financial years 17/18-18/19



Is heat really the problem?



Action on the Underground

Braking energy (50%)

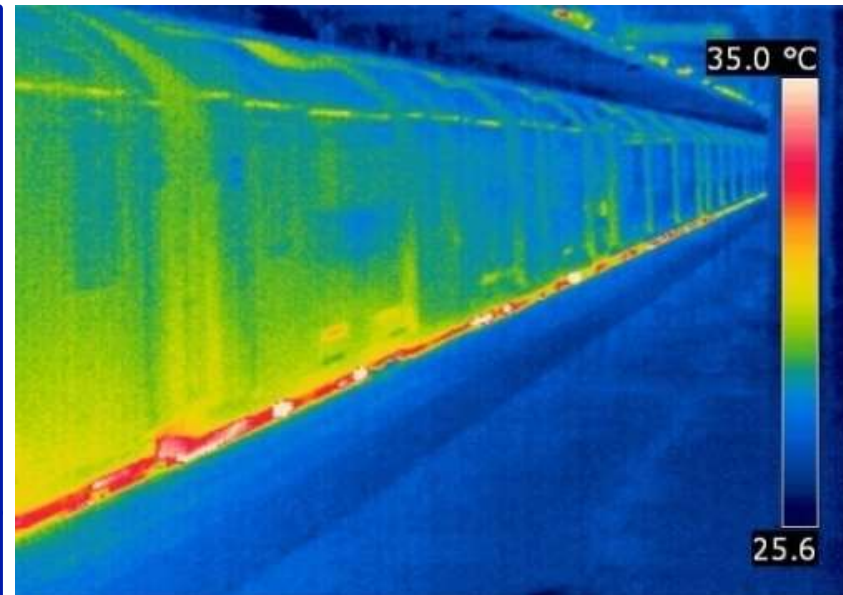
Aerodynamic drag &
other frictional losses
(21%)

Motor & drive losses
(15%)

Train auxiliary energy
(6%)

Electrical system losses
(6%)

Passengers (2%)



Action on Buses



Action on Roads

10 Healthy Streets Indicators



Asks to improve resilience

- Adaptive pathways
- Interdependence
- Profile



Contact

katherinedrayson@tfl.gov.uk



EVERY JOURNEY MATTERS