



Modelling heat risks in **London** and **Barcelona**

ISGlobal

Barcelona
Institute for
Global Health

Dr. Vijendra Ingole

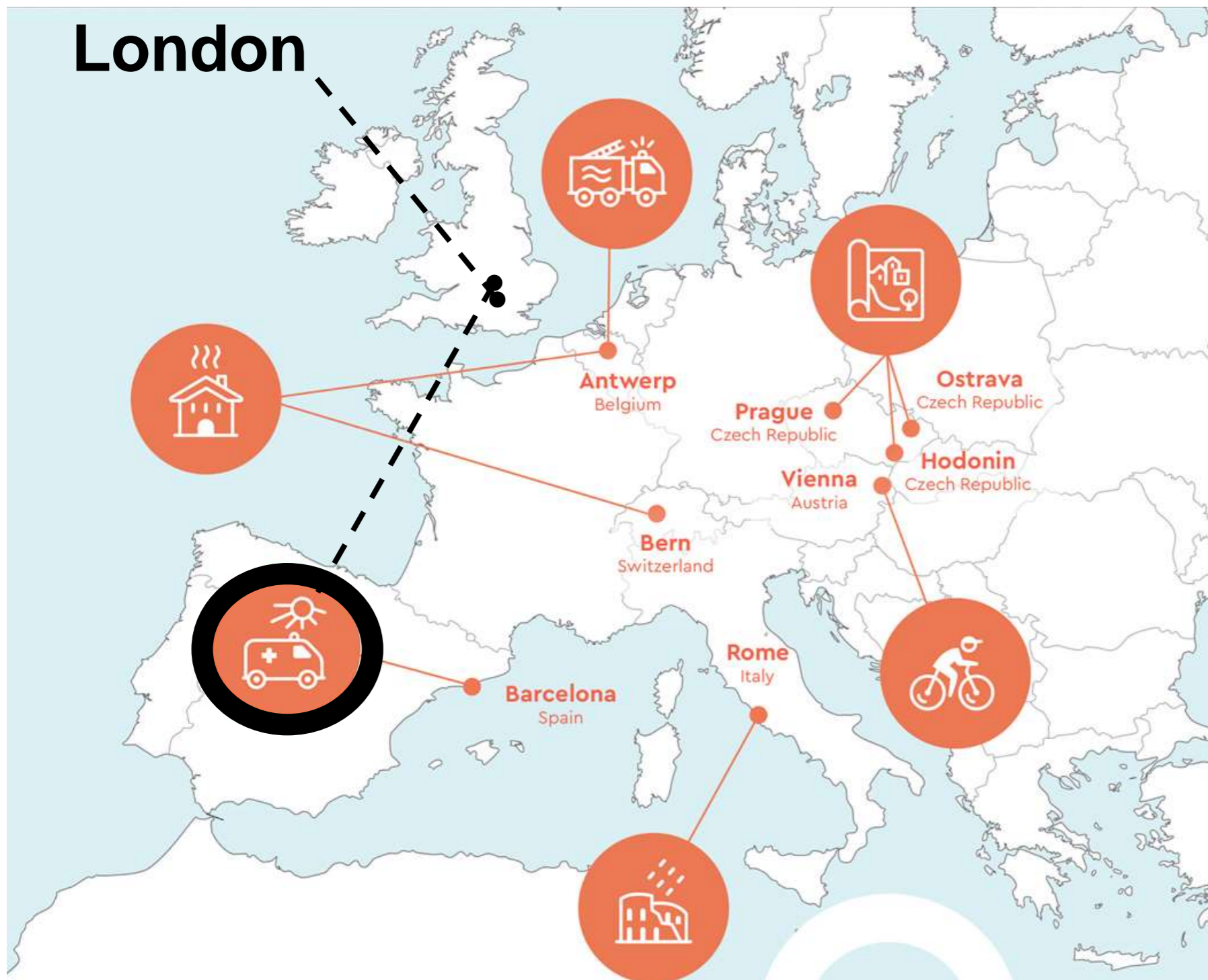
Program of Climate and Health - ISGlobal

In collaboration with **Peninah Murage and Shakoor Hajat** (LSHTM),
Dirk Lauwaet and Filip Lefebvre (VITO), **Joan Ballester** and Anna
Deluca Silberberg (ISGlobal), **Marc Marí** and **Marcos Quijal** (ASPB),
Christophe Sarran (MetOffice)

Health Service



London

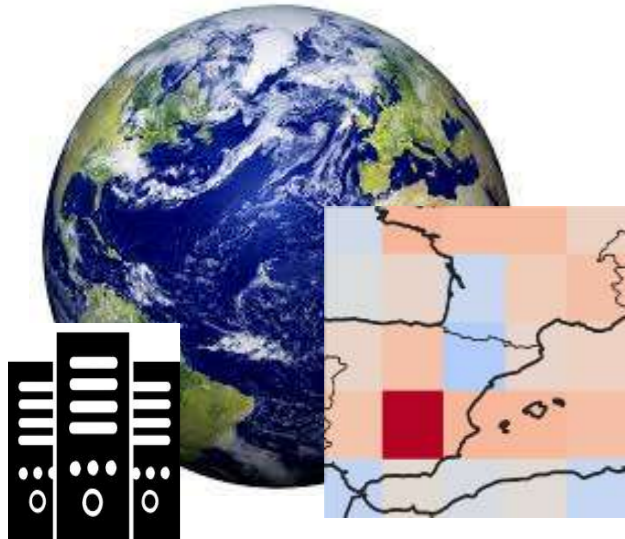


- Active mobility
- Building energy
- Cultural heritage
- Emergency planning
- Health
- Urban planning

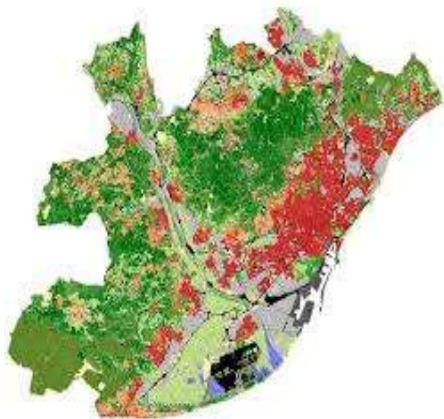
Climate-fit.city is developed as part of the PUCS project, which has received funding from the European Union's H2020 Research and Innovation Programme under Grant Agreement No. 73004

Urban Climate Models

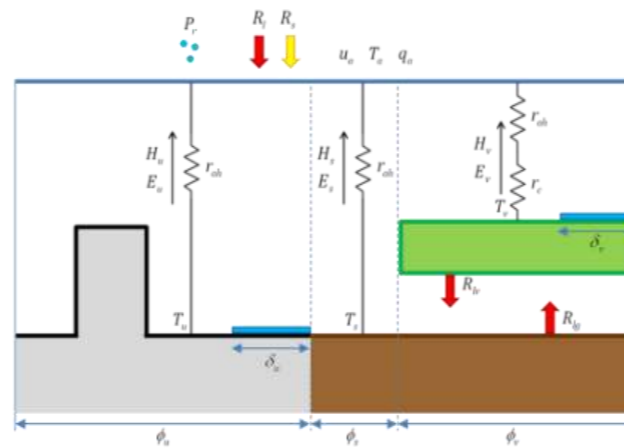
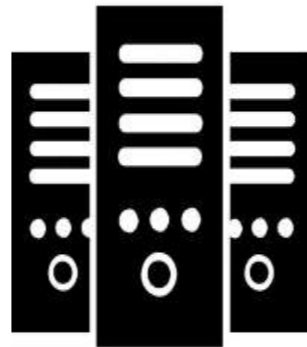
Large-scale Climate information
(80x80km/30x30km)



Land Use Information < 100m



Climate Urban Modelling



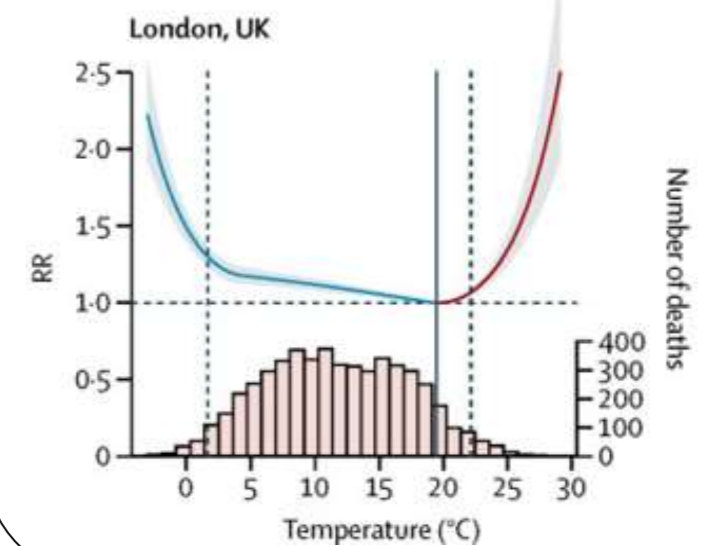
Our Maths and Physics best knowledge modelling 3 lower km of the atmosphere *boundary layer* + *surface scheme with urban physics*



Temperature and other variables at city scale

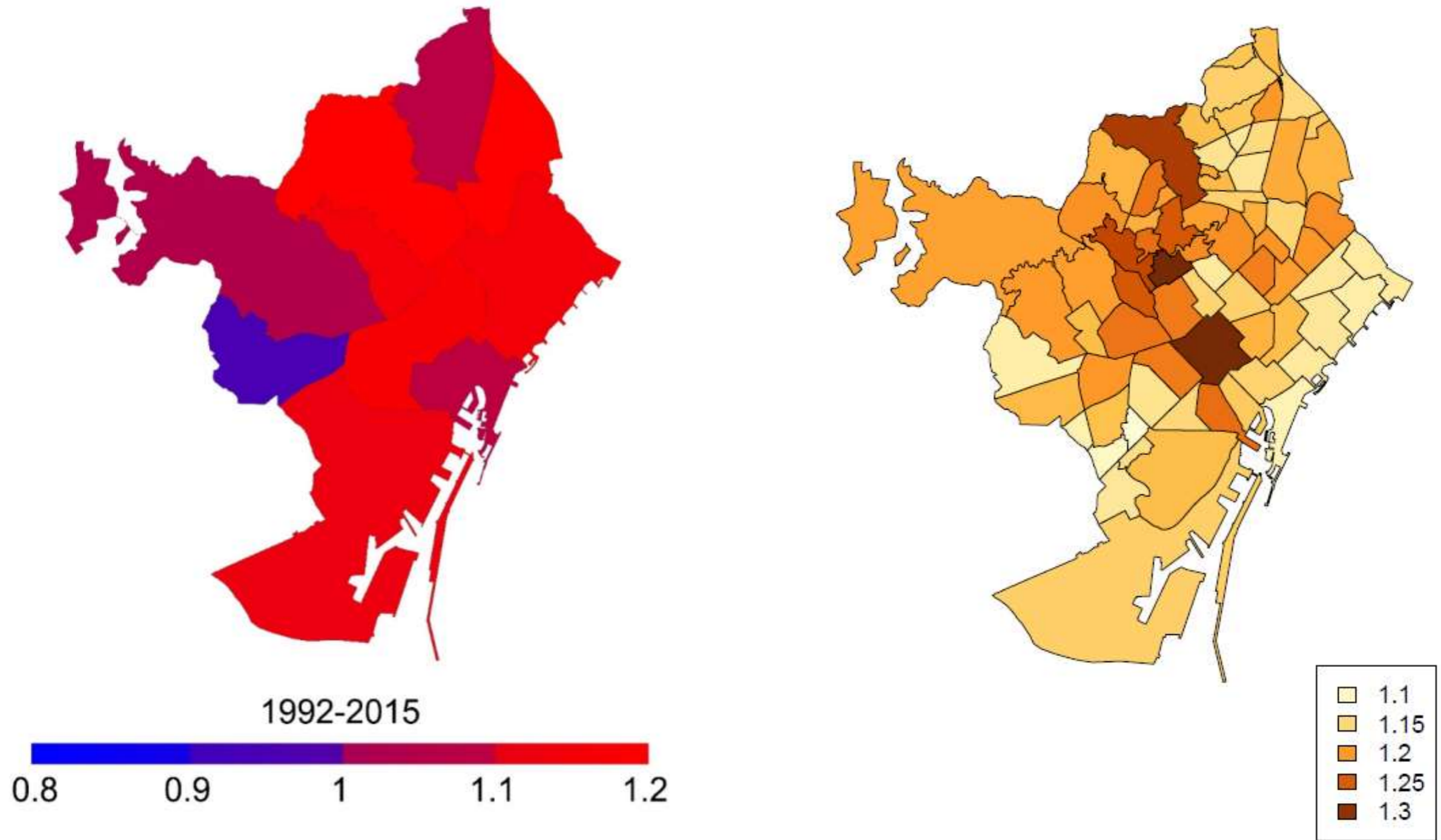


Health Impact Models



Gasparini et al. 2015, The Lancet.

Spatial Variability in heat-related mortality in Barcelona

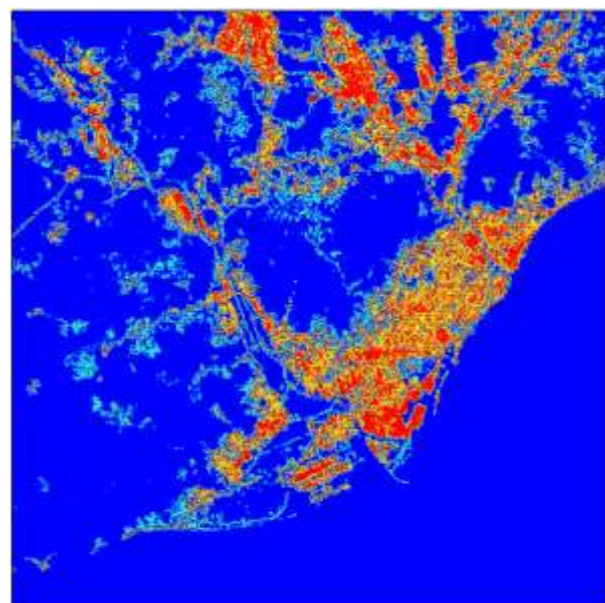


District level

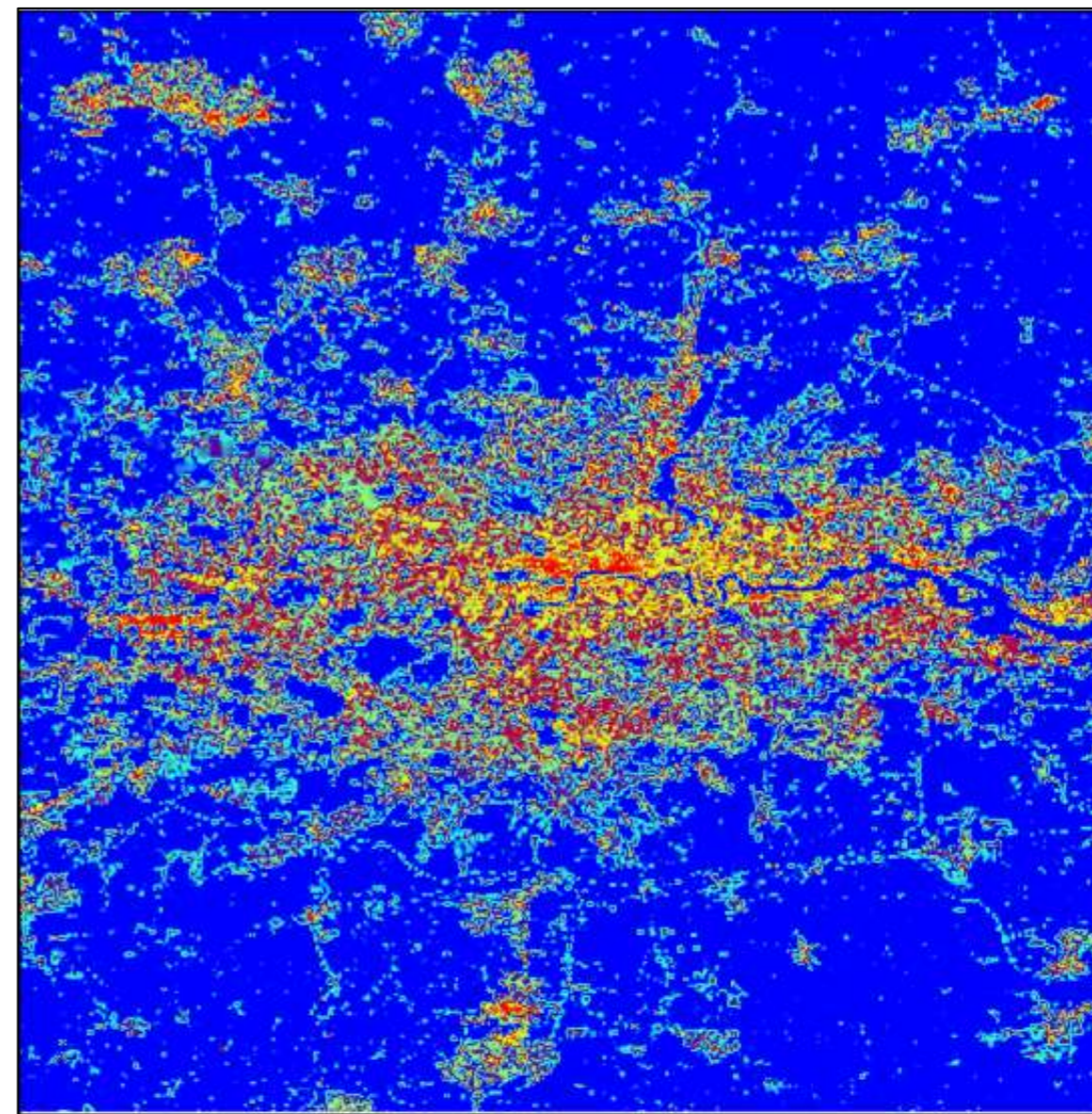
Neighbourhood level

***Example of surface data
used for the simulation***

Soil sealing fraction of grid cell (%)

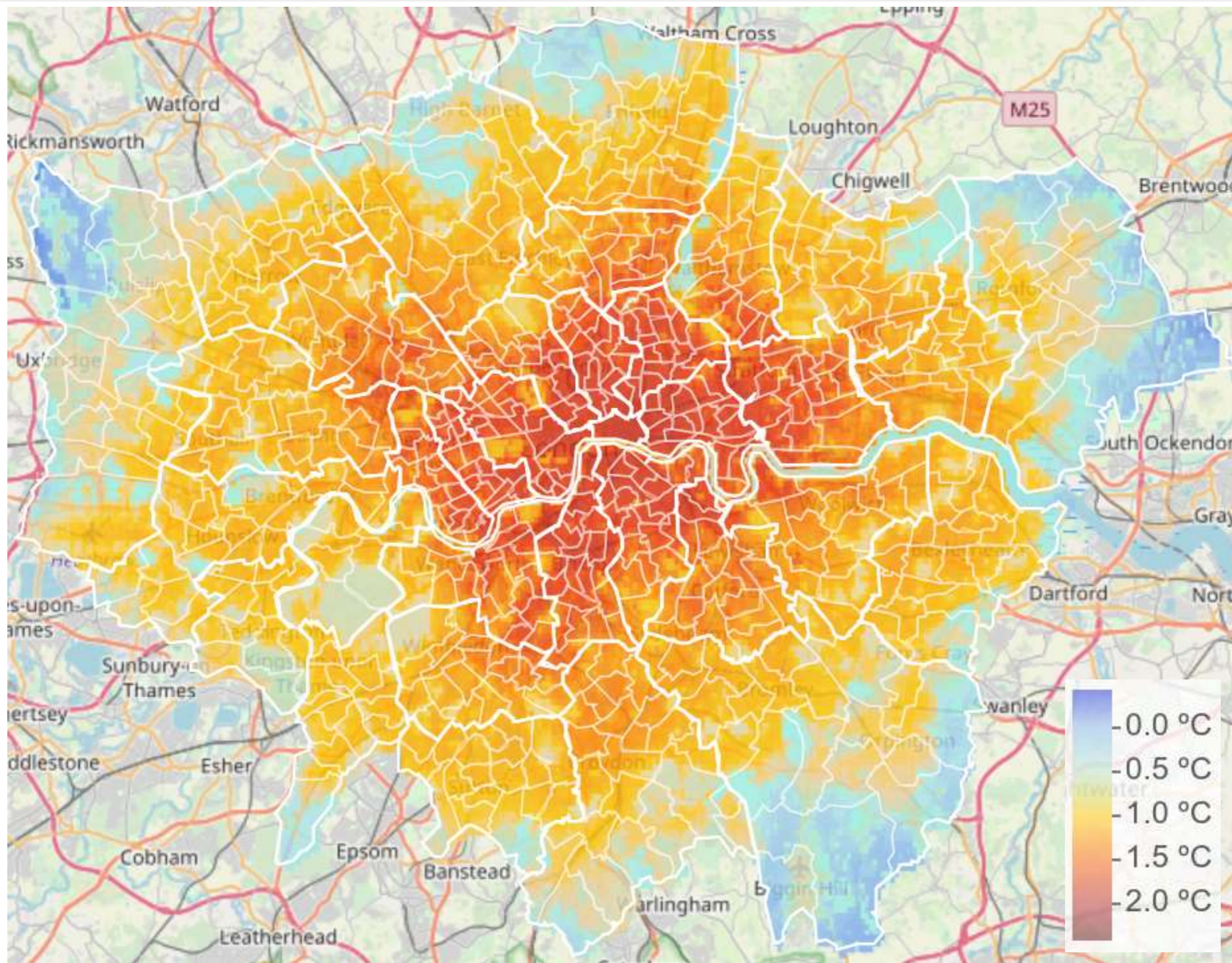


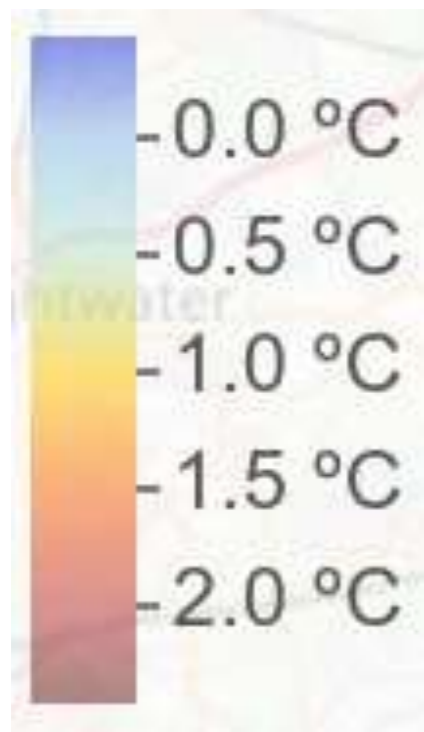
Resolution: **100x100m**, hourly
Domain size: 40x40km in total
Variables: temperature, humidity



Resolution: **250x250m**, hourly
Domain size: ~90x90km in total
Variables: temperature, humidity

Periods: **last 30 years reanalysis plus RCP 4.5 and RCP8.5 2011-2100**





+2.4°C at the end of the century

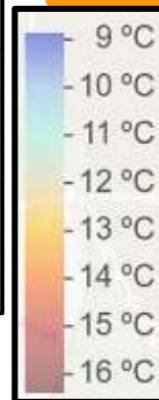
2011-2040

2041-2070

2071-2100



1988-2017



+3.5°C at the end of the century

2011-2040

2041-2070

2071-2100



Health Impacts: Heat Risks

Combining climate information and **georeferenced mortality data**.



Population Group

Female by Borough

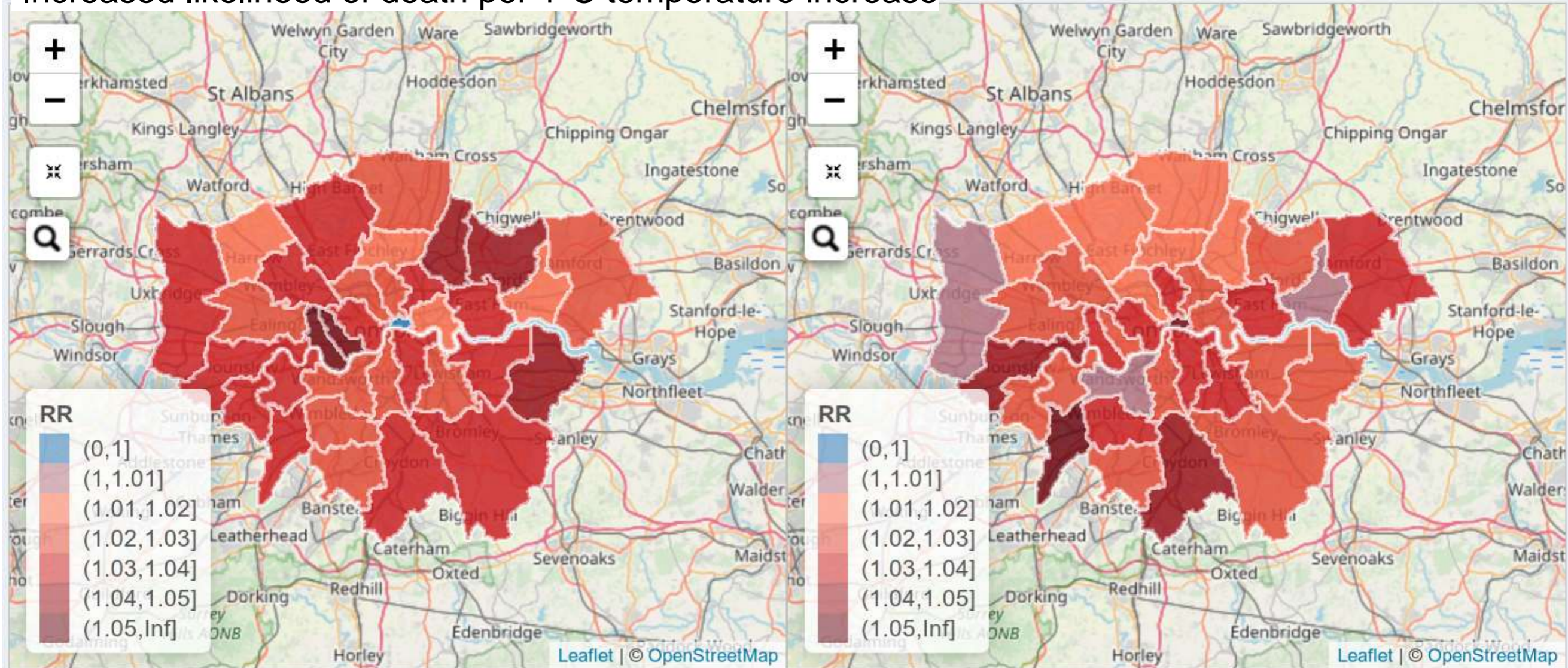


Population Group

Male by Borough



Increased likelihood of death per 1°C temperature increase



Which areas and population groups of the city are at higher risk?

<https://londonheat.shinyapps.io/climate-fit-city/>

Other Cities Being Simulated by VITO

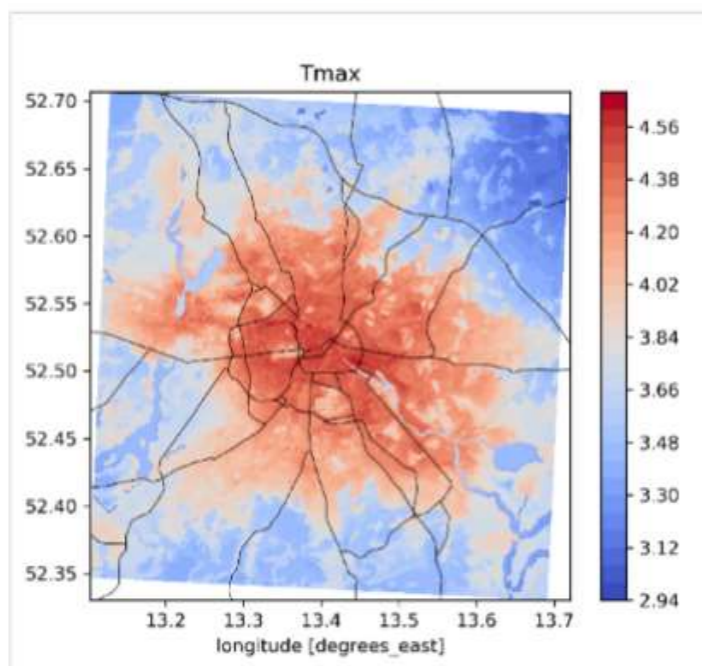
In the UK: Leeds, Newcastle, Edinburgh, Glasgow and Birmingham



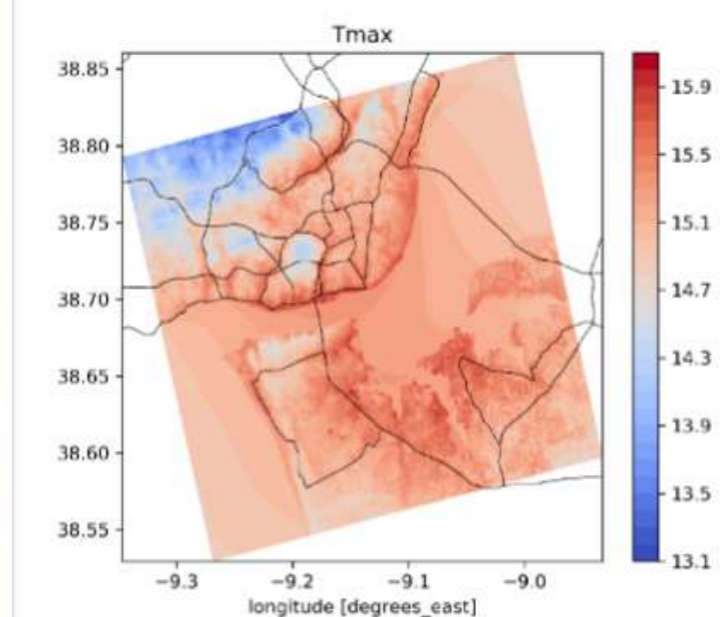
Climate
Change

Urban simulations for 100 cities

Berlin winter

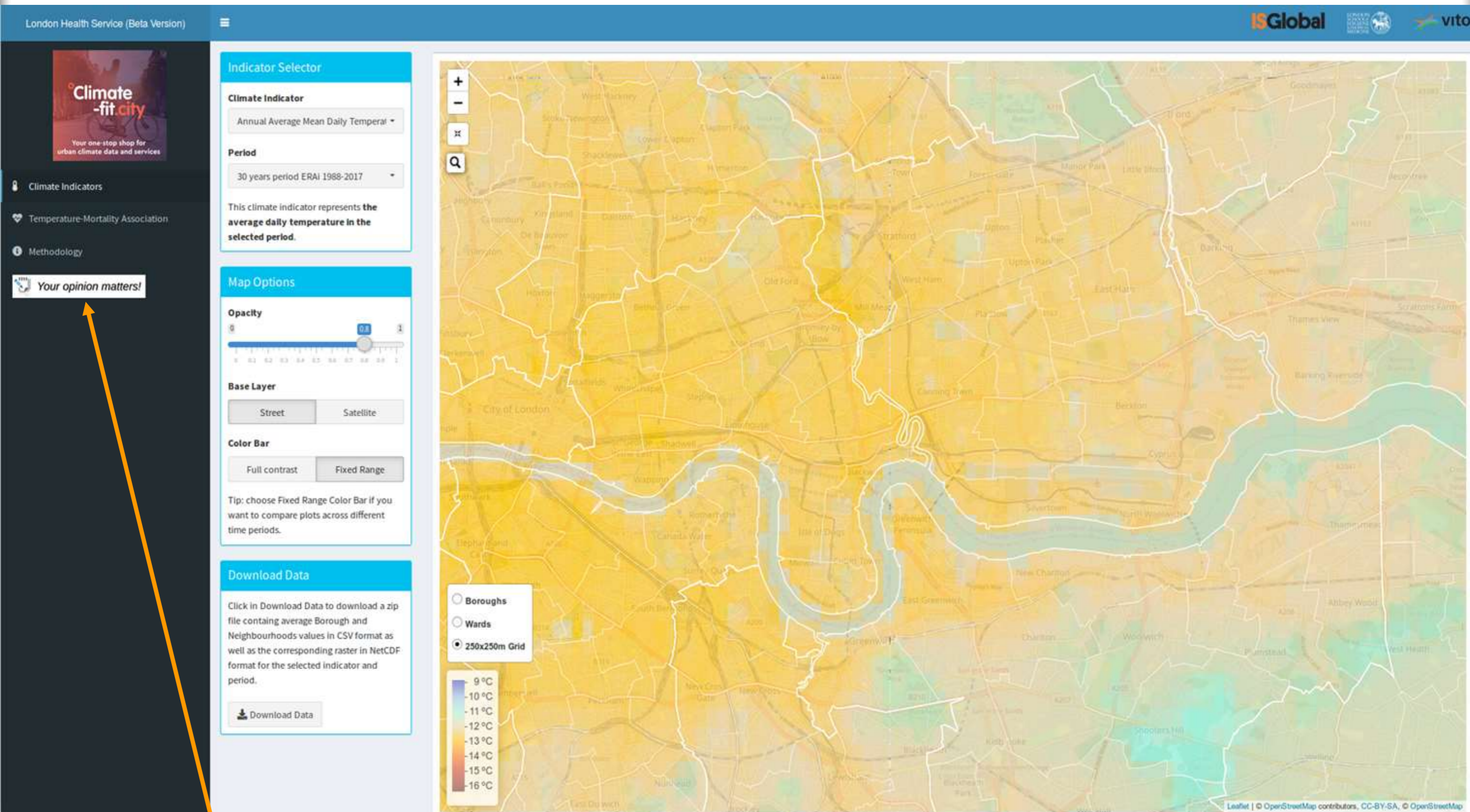


Lisbon winter



100 m spatial resolution (hourly values, ERA5, 10-yr period 2008-2017)

Climate information and Raw Data Release Plan



Your opinion matters!



LONDON
SCHOOL of
HYGIENE
& TROPICAL
MEDICINE



Thank you!



ISGlobal
Barcelona
Institute for
Global Health



Climate-fit.city is developed as part of the PUCS project, which has received funding from the European Union's H2020 Research and Innovation Programme under Grant Agreement No. 73004

***For a fit-for-purpose
service***



Your opinion matters!

***[https://londonheat.shinyapps.io/
climate-fit-city/](https://londonheat.shinyapps.io/climate-fit-city/)***