

Climate Change Impacts: South East and London

Kristen Guida

Director, Climate UK

Manager, Climate South East

The Climate UK network

- 1 Sustainability East
- 2 Climate East Midlands
- 3 London Climate Change Partnership
- 4 Climate NE
- 5 Climate Change Northwest
- 6 Climate South East
- 7 Climate SouthWest
- 8 Sustainability West Midlands
- 9 Your Climate - Climate Change Partnership for Yorkshire and Humber
- 10 Climate Northern Ireland
- 11 Adaptation Scotland
- 12 Welsh Government



www.climateuk.net

We should prepare for the increasing risk of:

- floods
- droughts
- overheating
- ongoing cold winters
- sea level rise



London and South East –vulnerability

- Major networks and hubs in SE and London
- Urbanization
- High population and rising
- Density in coastal zones
- Transport underpins...

Why adapt?

1. We are not very well adapted to our current climate
2. In the future, even the average weather will present challenges to our current ability to cope
3. Adaptation actions can provide wider benefits
4. Some changes will take generations to implement and need to be started now to be ready when needed

“For every £1 invested now we can save £5, or possibly more, by acting now” –Sir Nicholas Stern, 2006



Extreme weather in the UK?

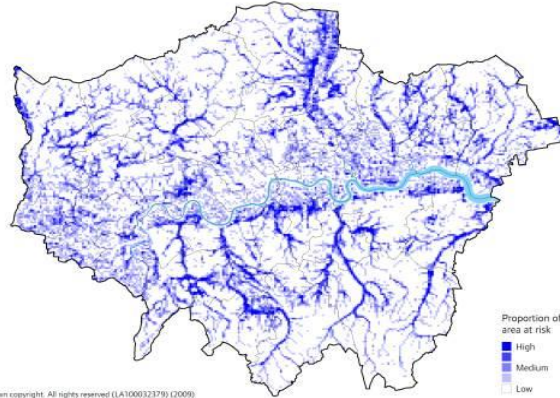
2000 – flooding	2008 – snow and ice
2001 – flooding	2009 – flooding
2003 – heatwave	2009 – snow and ice
2005 – flooding	2010 – flooding
2006 – drought	2010 – snow and ice
2006 – heatwave	2012 – drought
2007 – flooding	2012 – flooding
2008 – flooding	

Adaptation Support

AEA

MAYOR OF LONDON

London Sustainability



© Crown copyright. All rights reserved. (LA100032379) (2009)



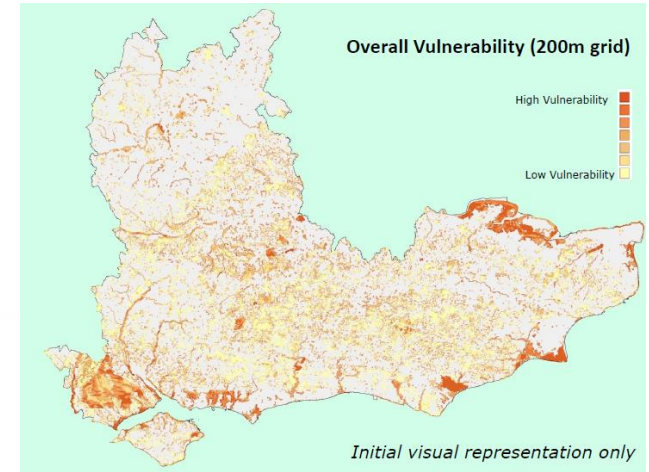
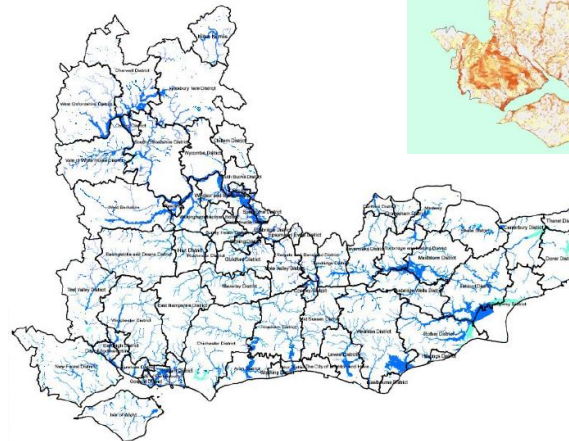
Climate change and London's transport systems

Transport for London

MANAGING RISKS AND INCREASING RESILIENCE

THE MAYOR'S CLIMATE CHANGE ADAPTATION STRATEGY
OCTOBER 2011

MAYOR OF LONDON





**KEEP
CALM
BUT DON'T
CARRY
ON AS USUAL**



Climate South East
www.climatesoutheast.org.uk

Kristen Guida
kristen.guida@climatesoutheast.org.uk

Carol Magras
carol.magras@climatesoutheast.org.uk

London Climate Change Partnership
www.climatelondon.org.uk

Juliette Daniels
juliette.daniels@london.gov.uk

Matt Dear
matthew.dear@london.gov.uk