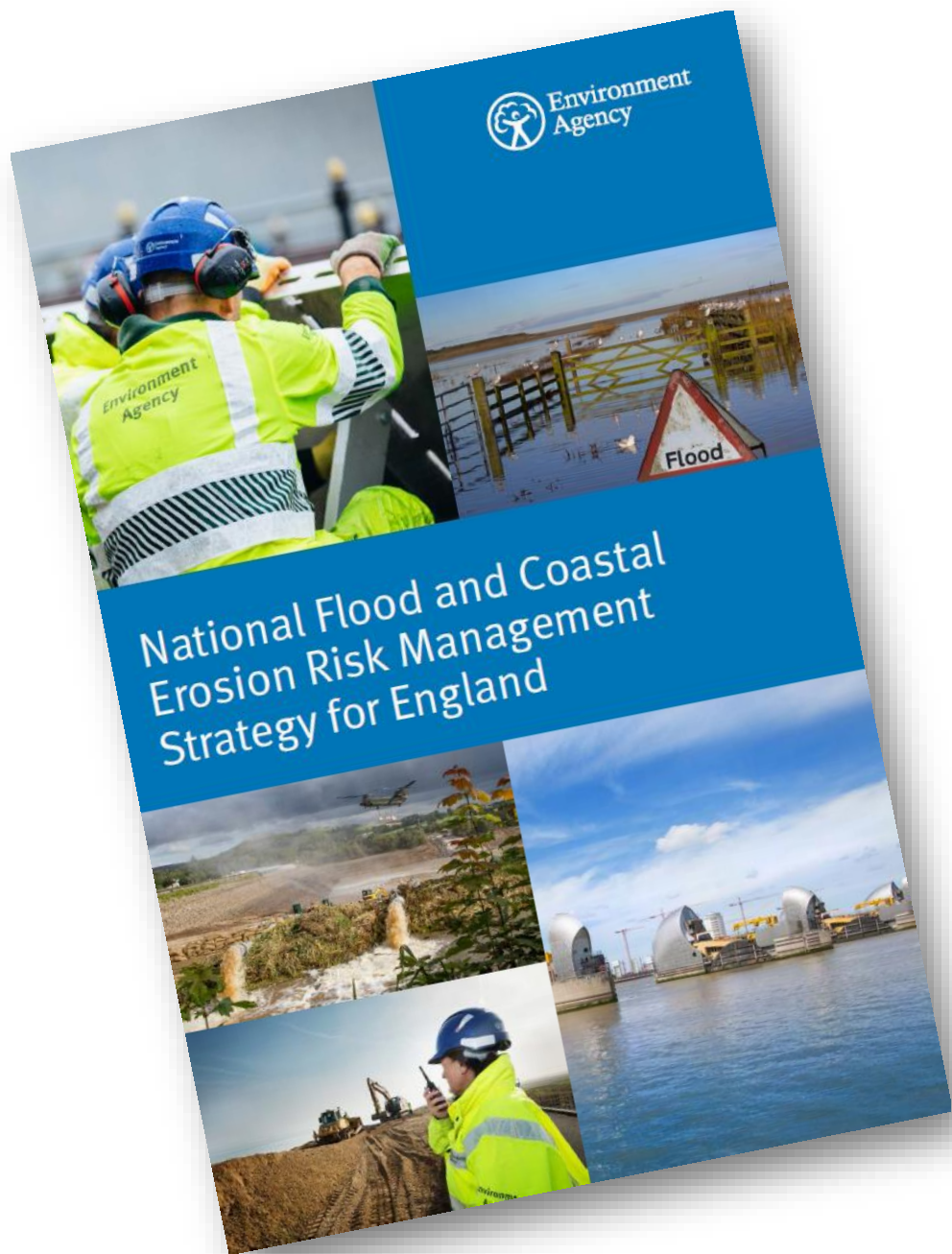


# Adaptation pathways: Structured decision-making for a changing world





Risk management authorities will work with partners to develop **adaptive pathways\*** in local places that equip practitioners and policy makers to better plan for future flood and coastal change and adapt to future climate hazards

\* An alternative term for adaptation pathways









# What is an adaptation pathway?

An adaptation pathway is a flexible, long-term, collaborative plan for **adapting** to an uncertain, and changing, situation (like climate change), by

- identifying **pathways** - sequences of potential actions - to cope with a range of possible futures,
  - monitoring to understand how the future is unfolding,
- and
- investing in the most appropriate sequence of actions at the right time.



# Benefits of adaptation pathways

Long-term planning

Cost effective

Offer alternatives

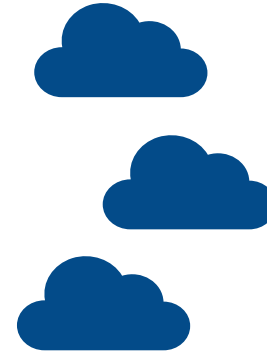
Collaboration

Environmental benefits

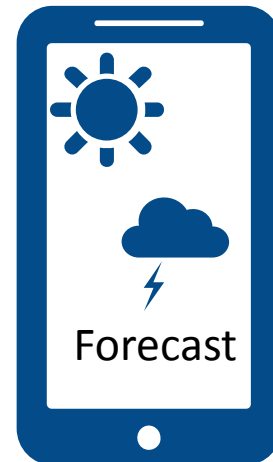


# Key features of adaptation pathways

Planning for uncertainty



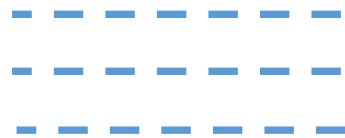
Monitoring



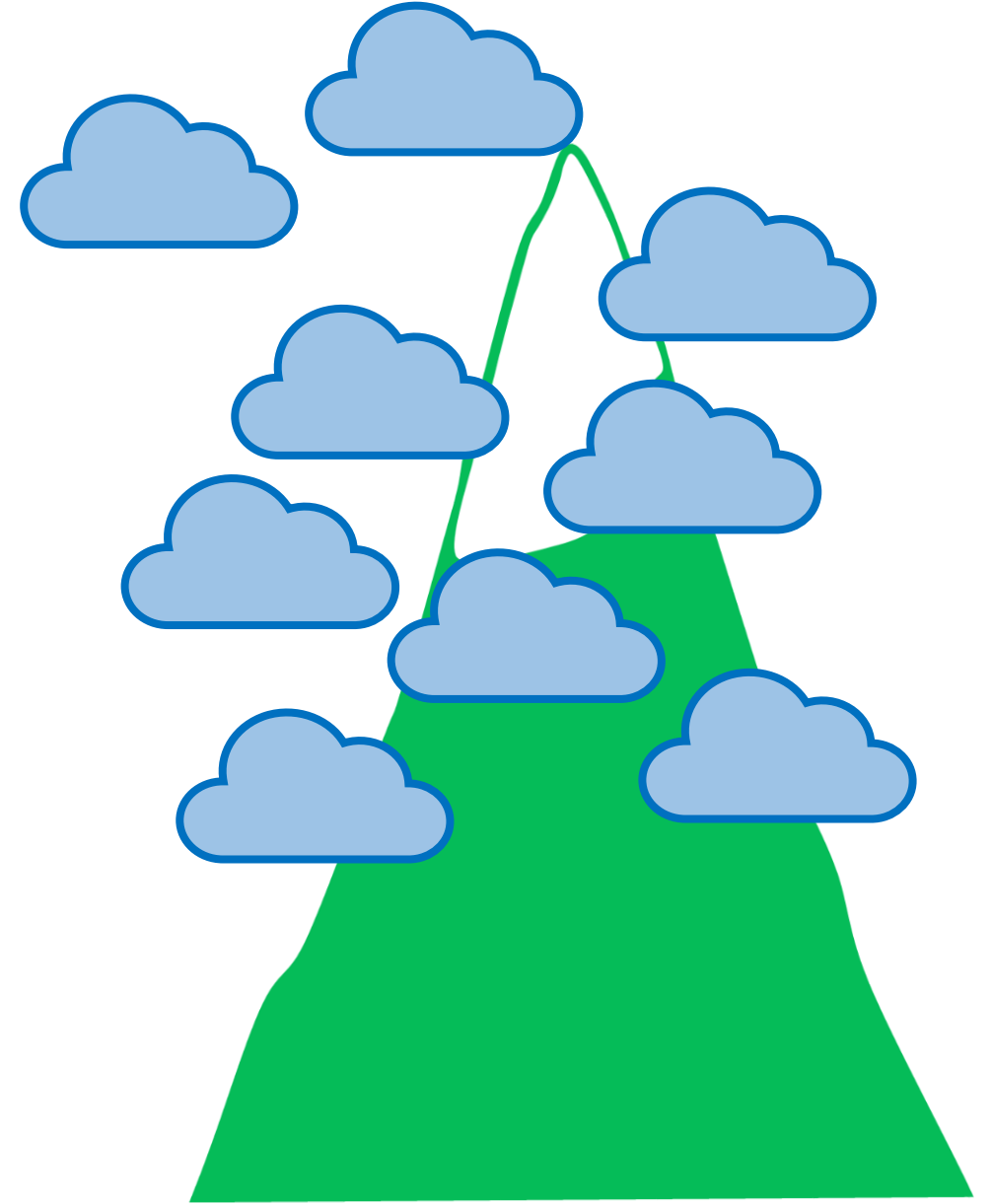
Decision points



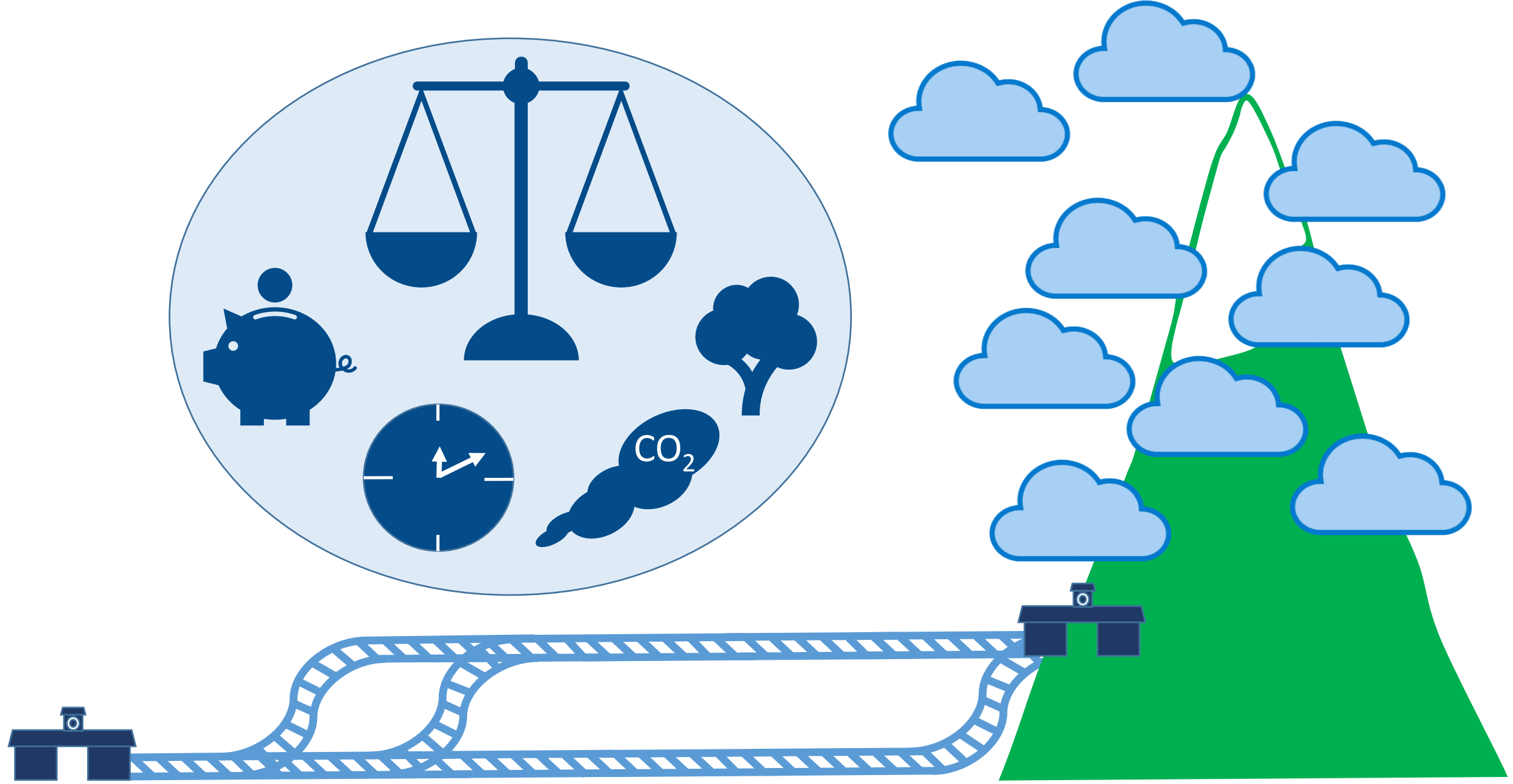
Thresholds

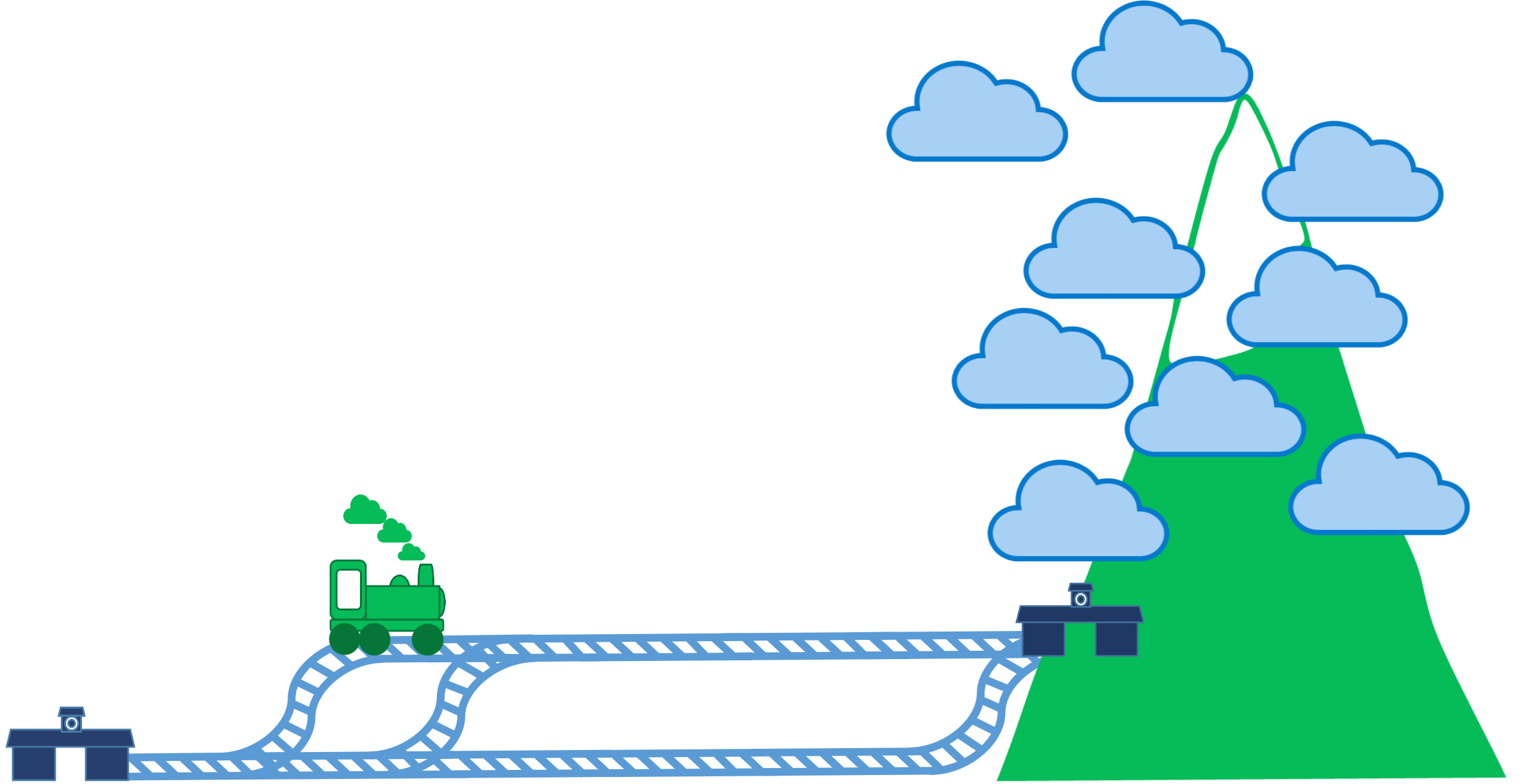


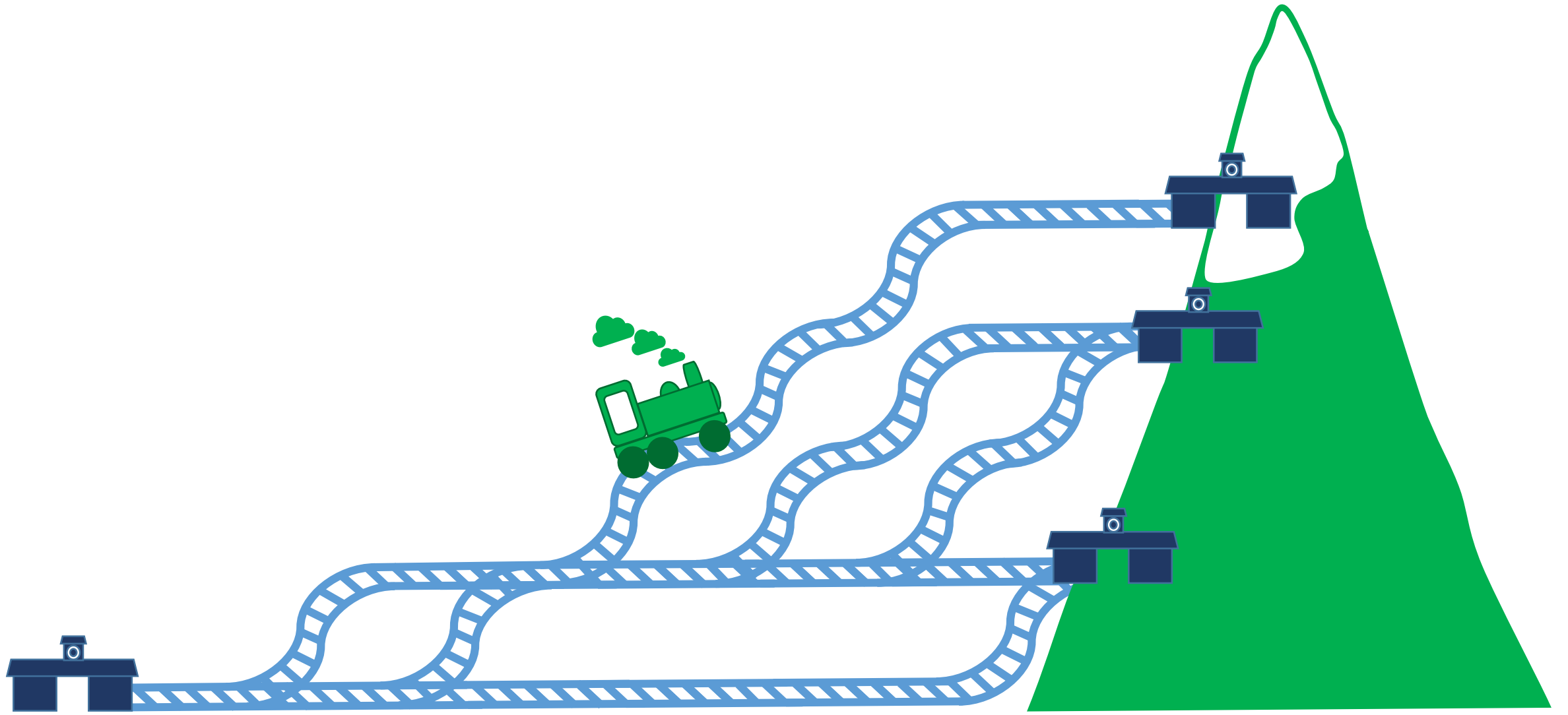
# An analogy for adaptation pathways

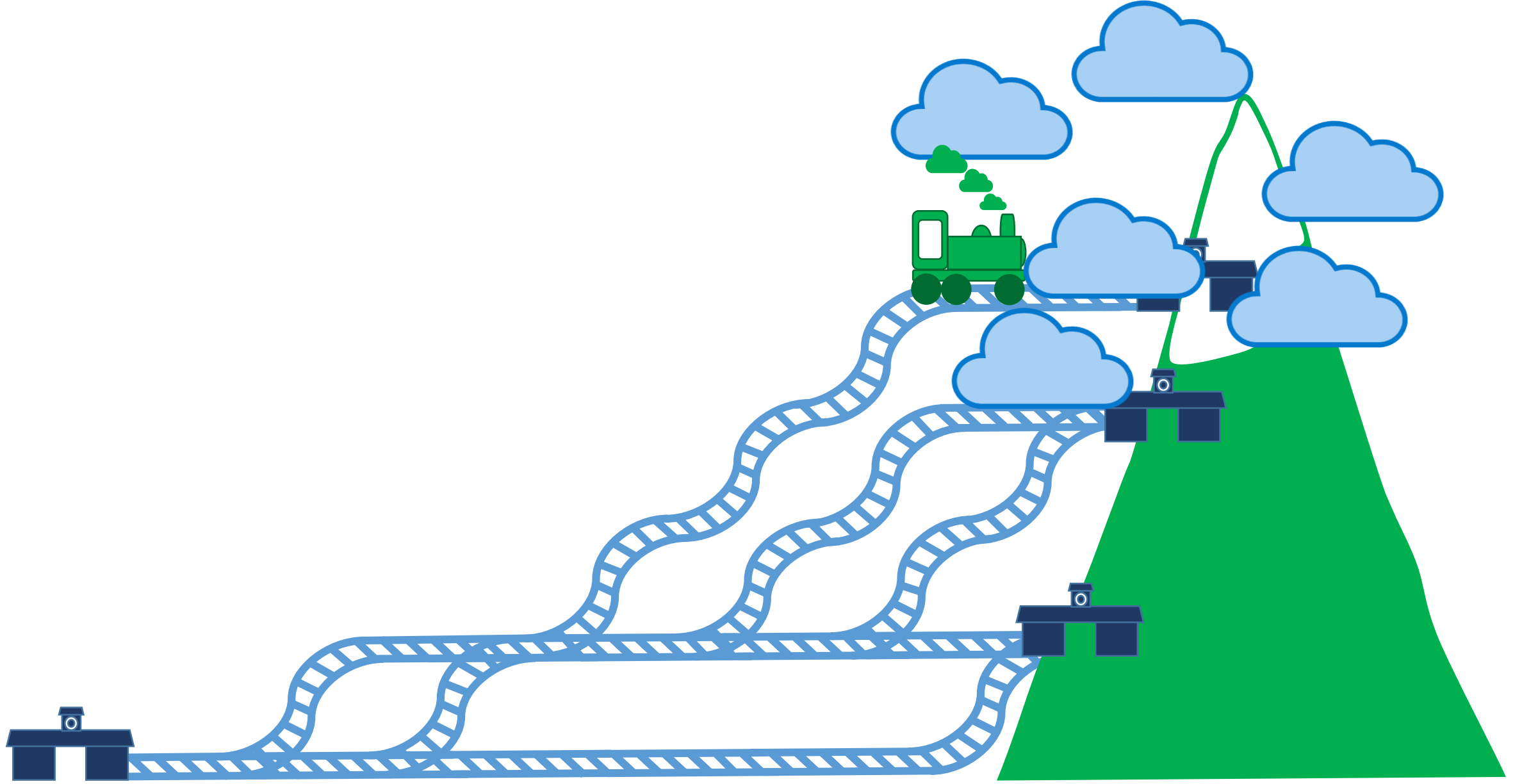


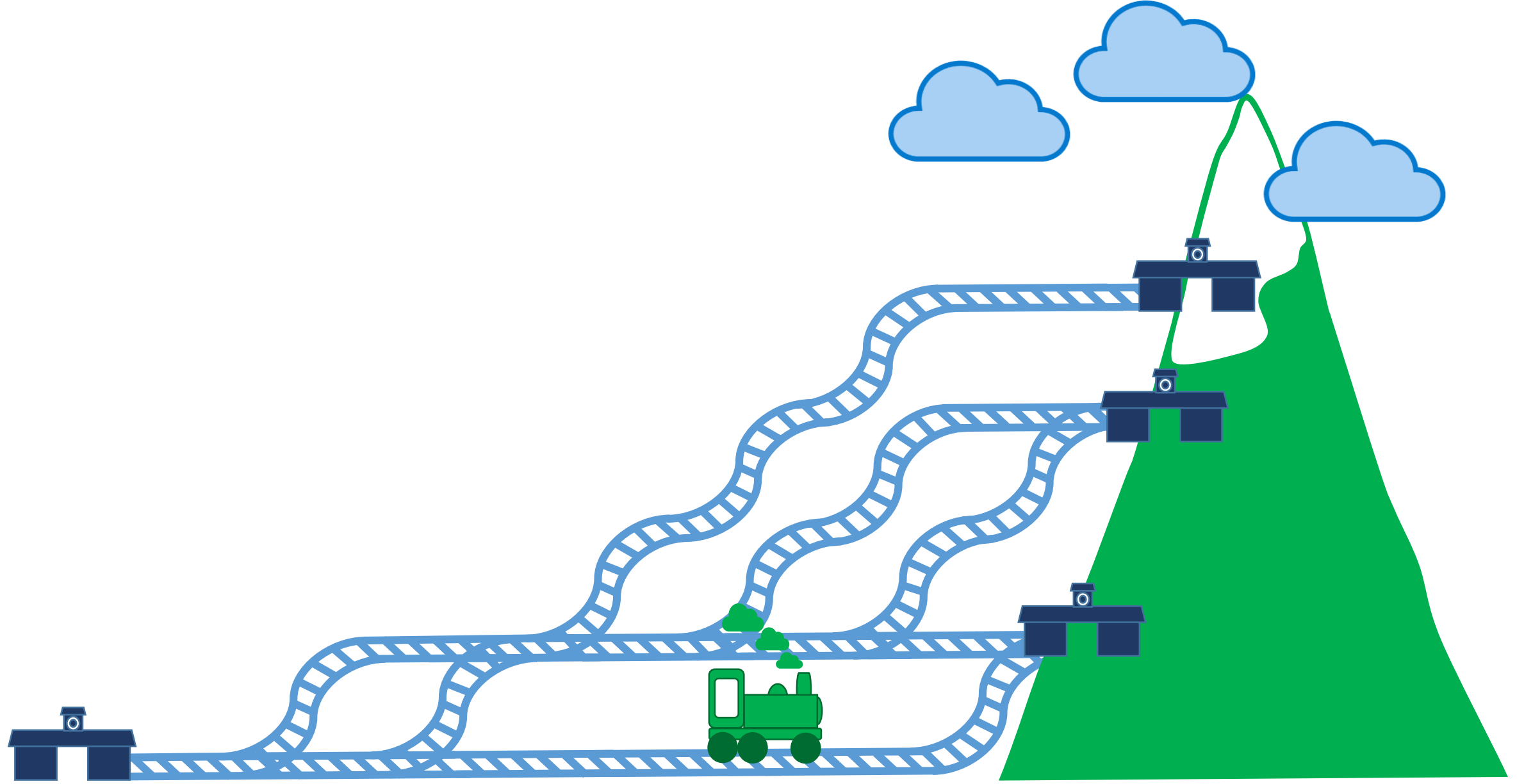








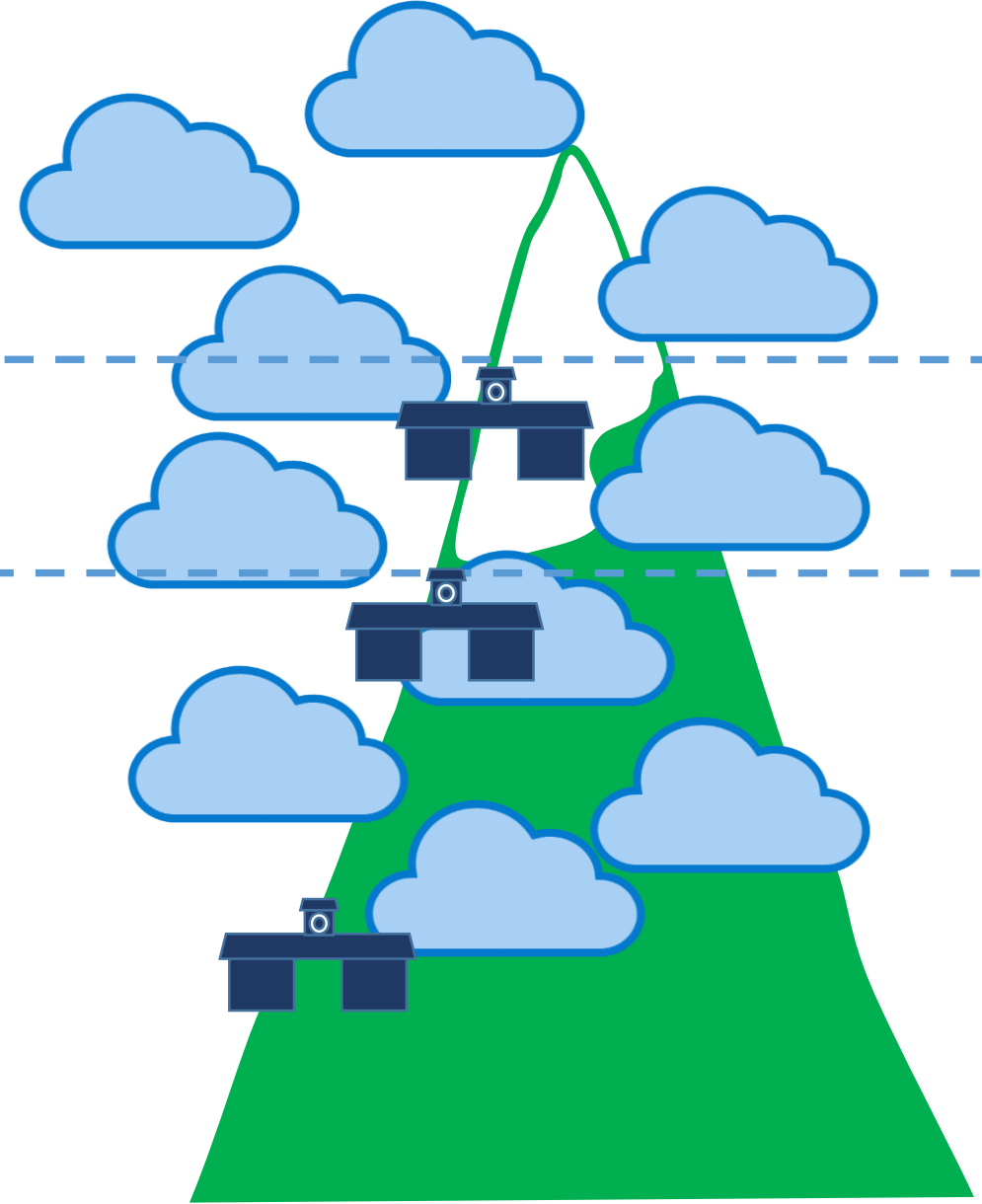




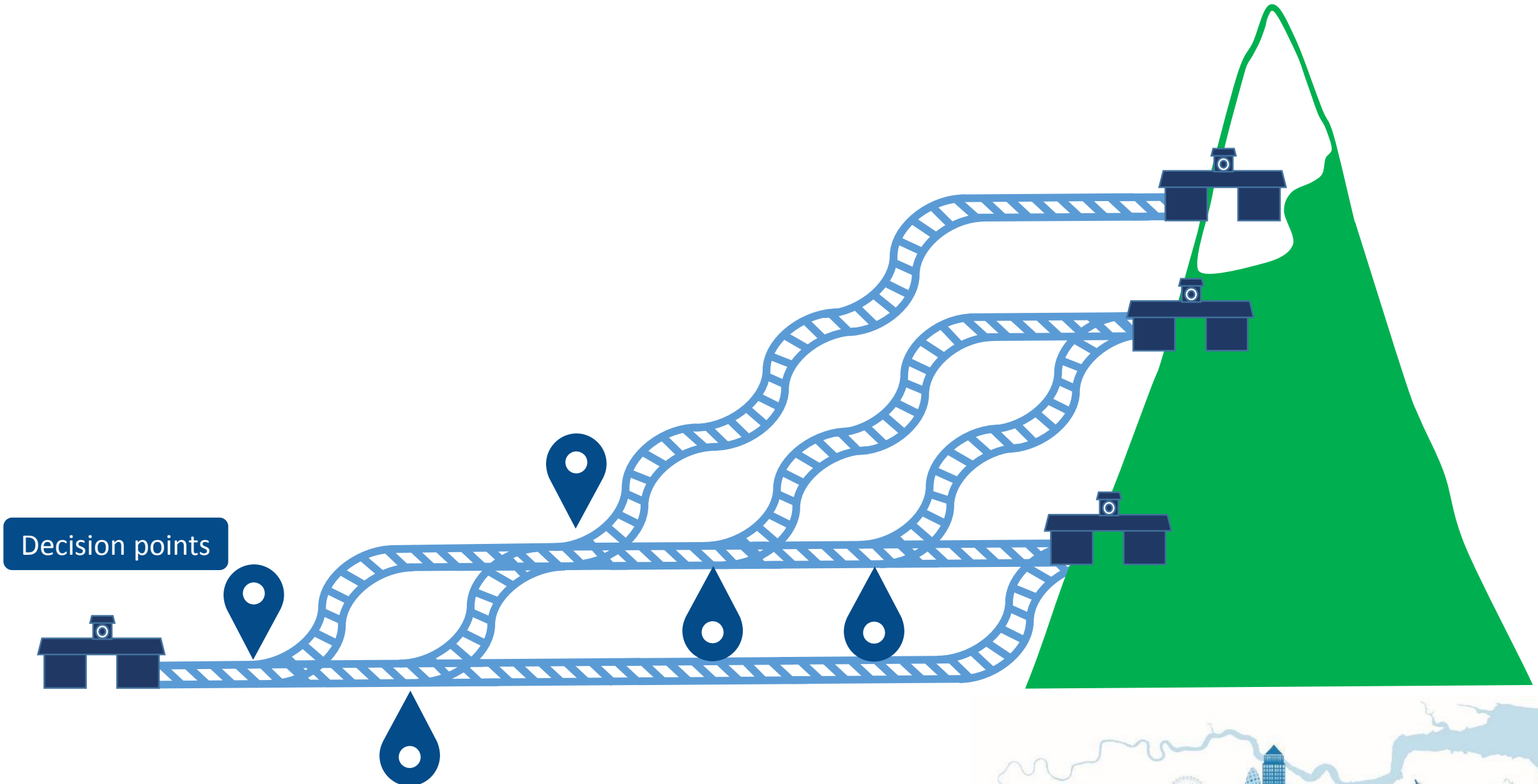


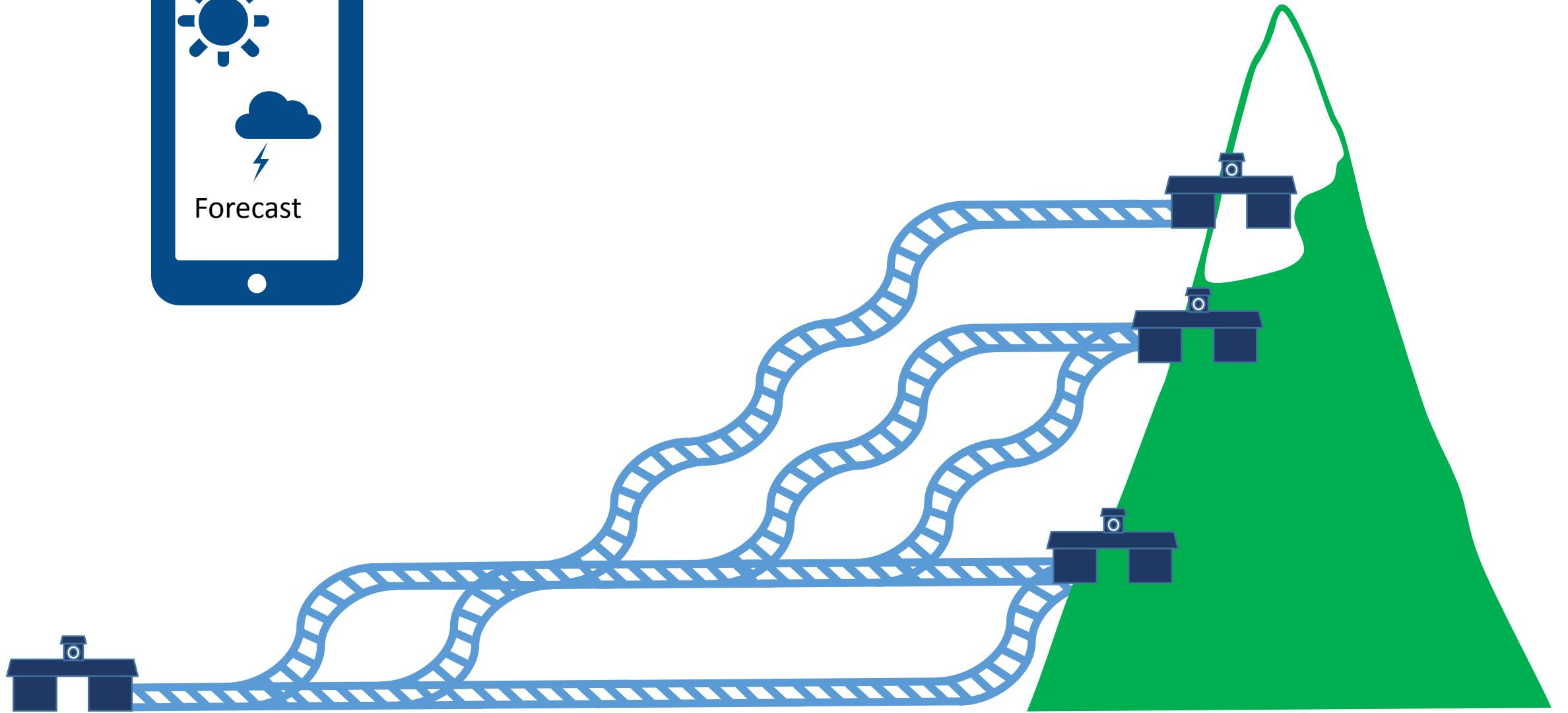
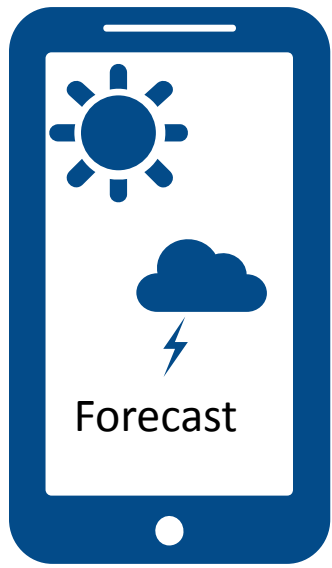
Threshold for travel to upper station

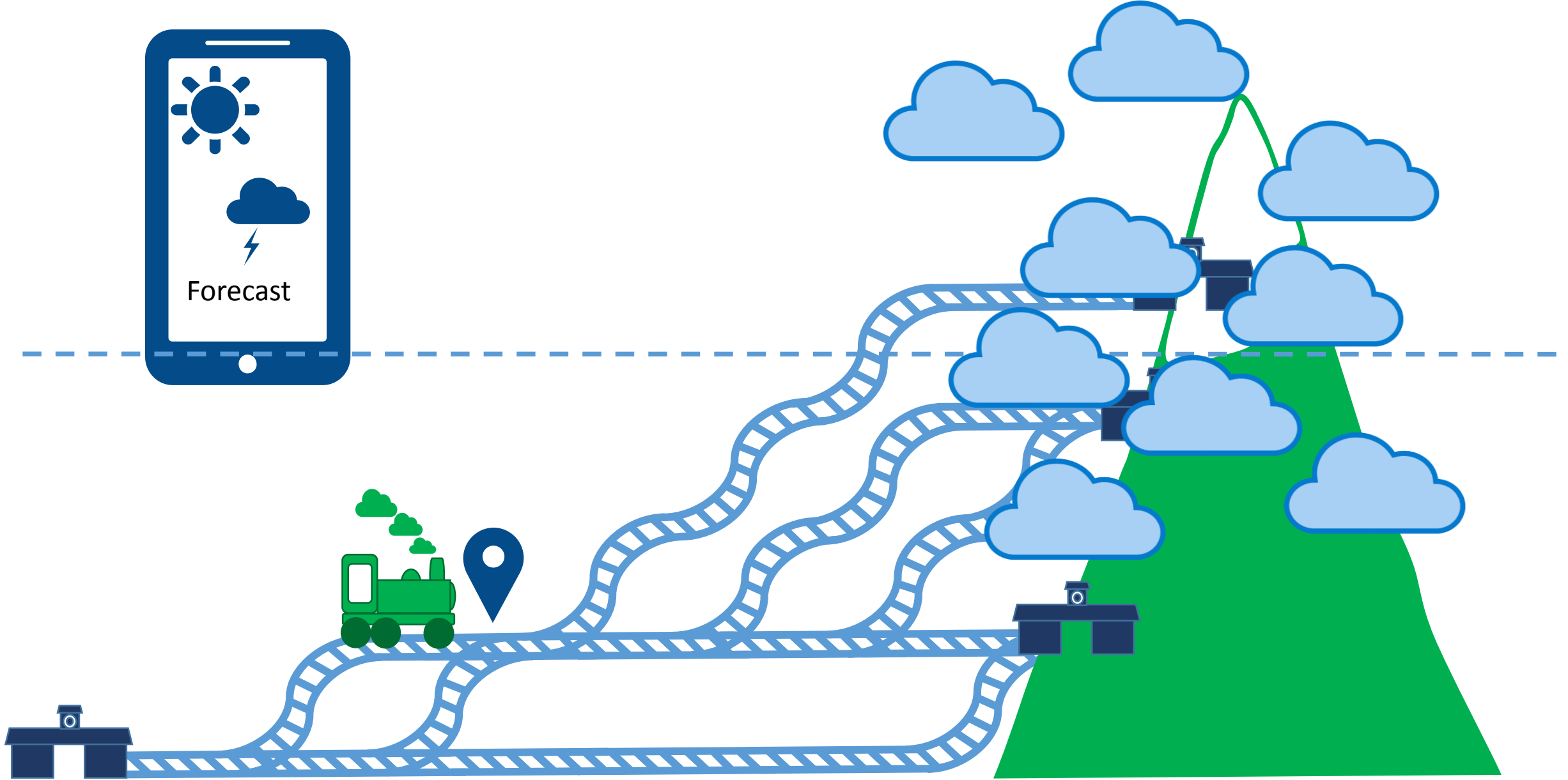
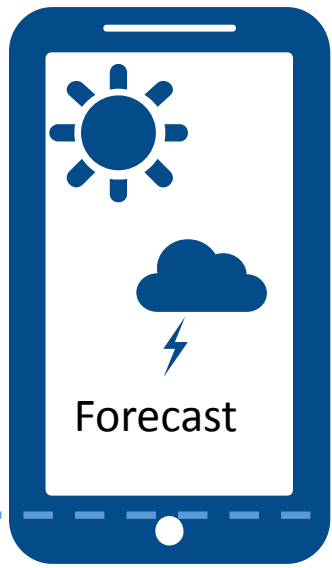
Threshold for travel to middle station

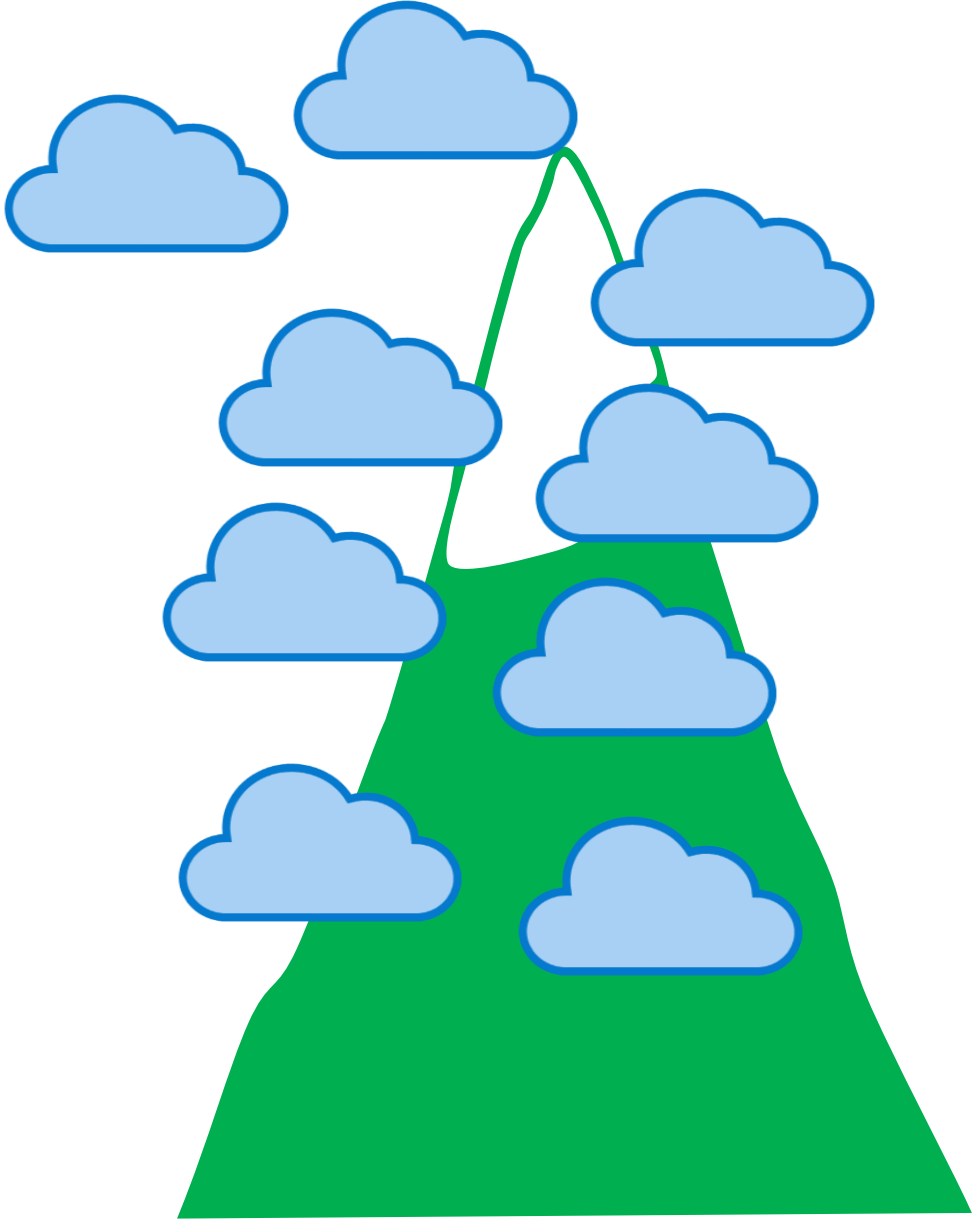


Decision points

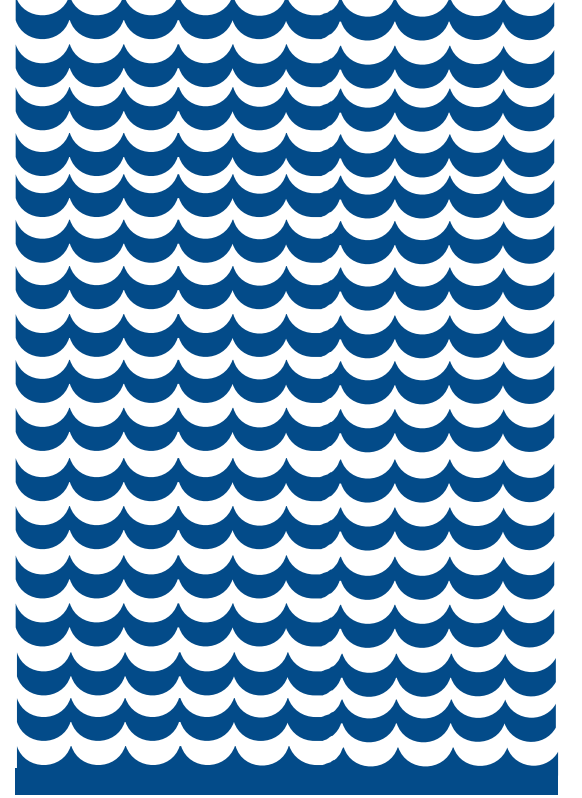
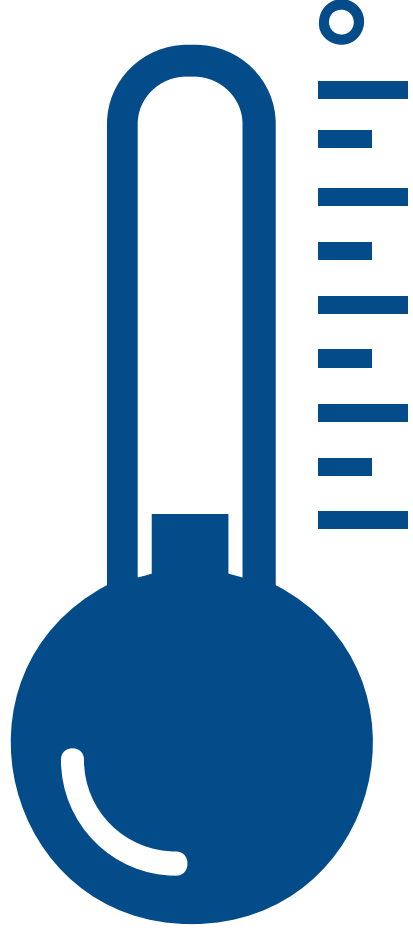




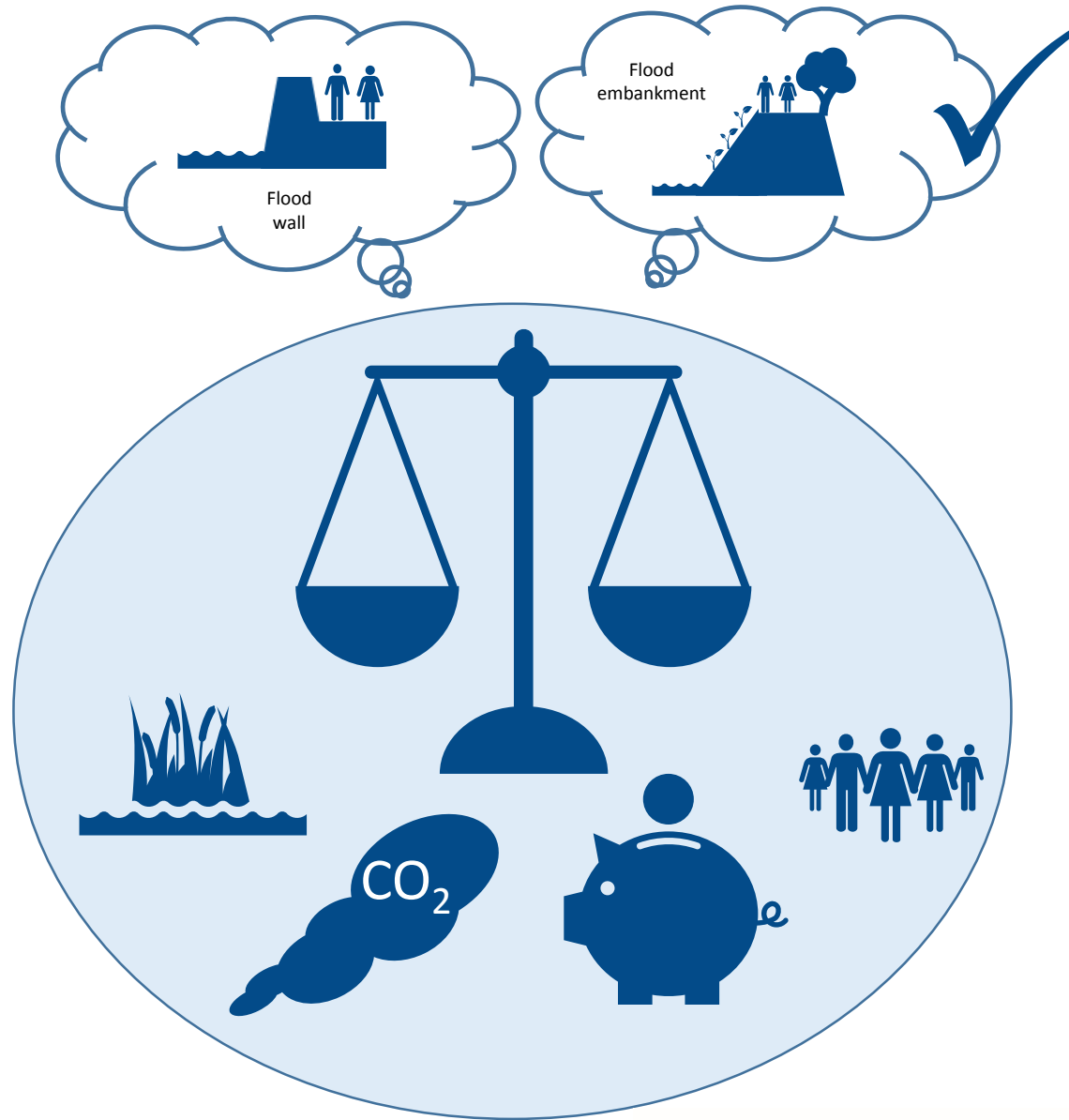


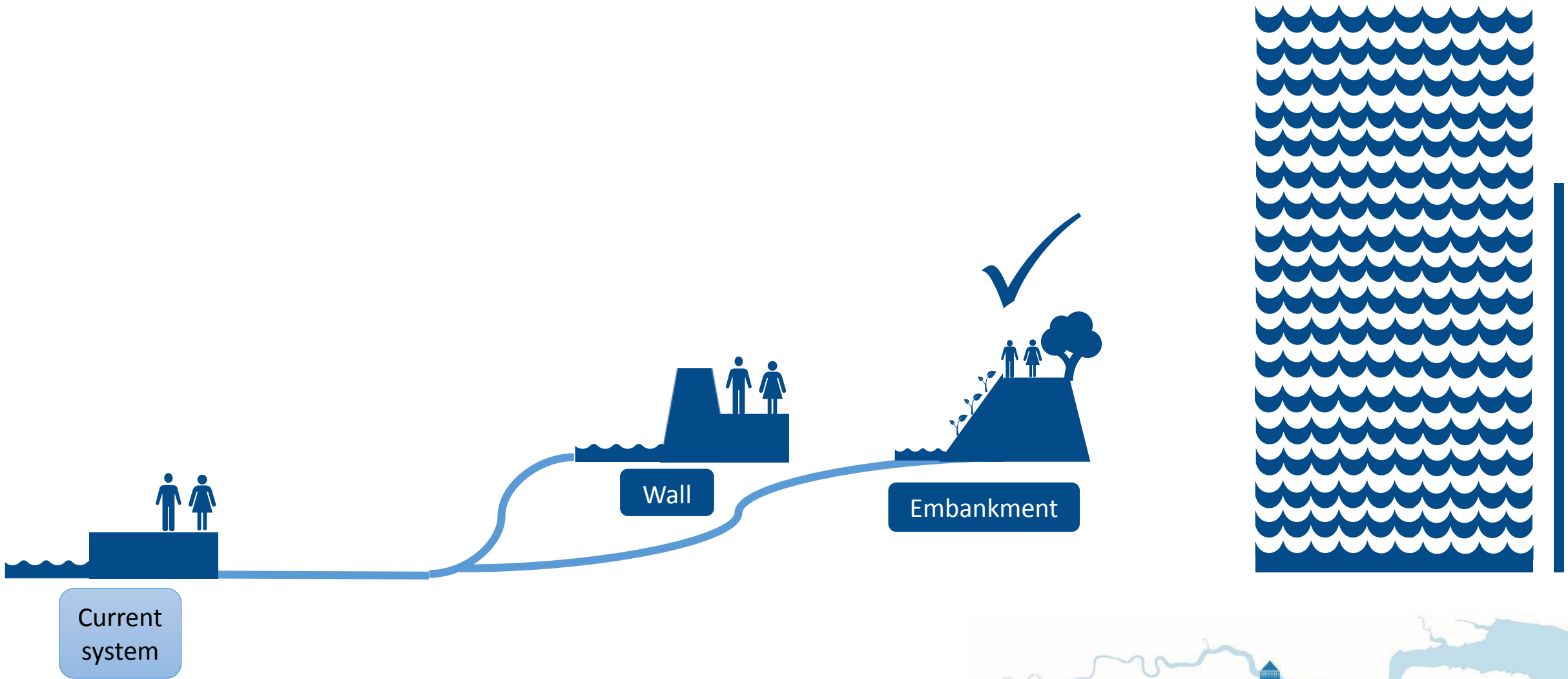


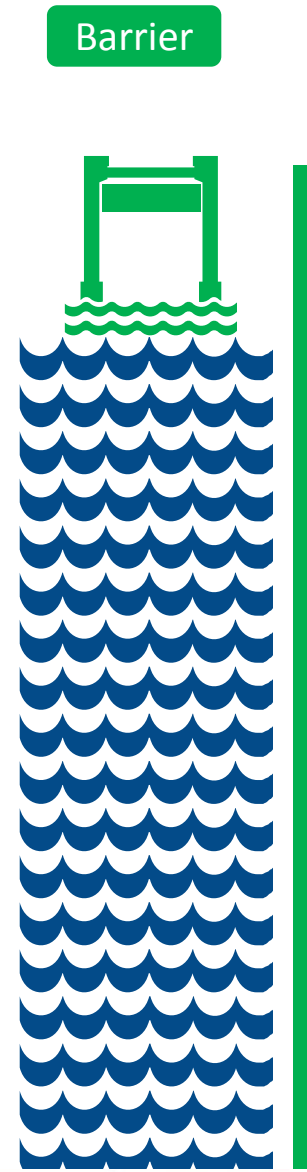
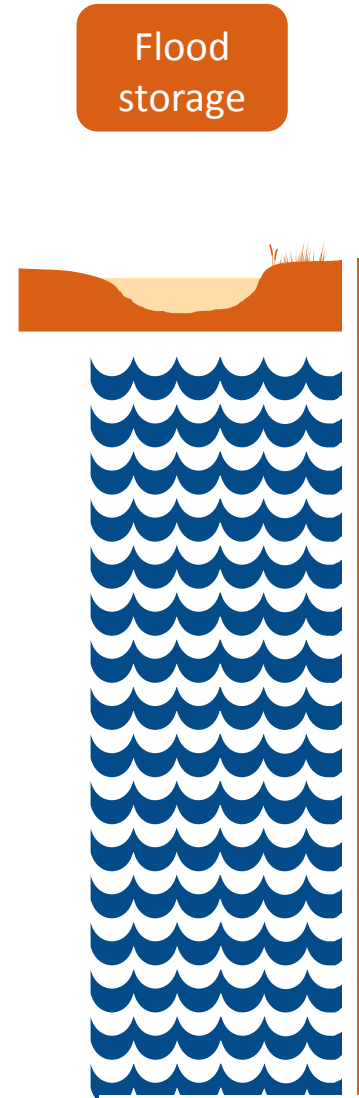
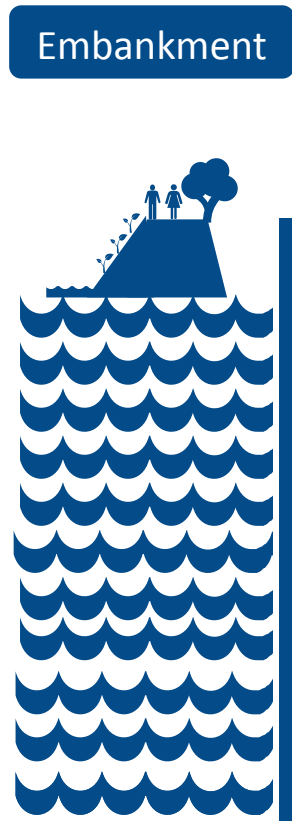
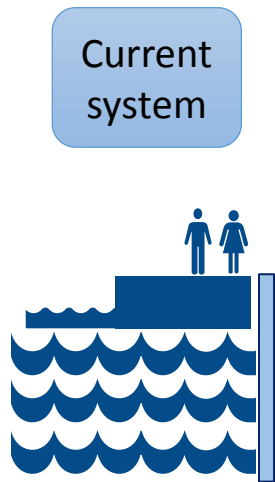


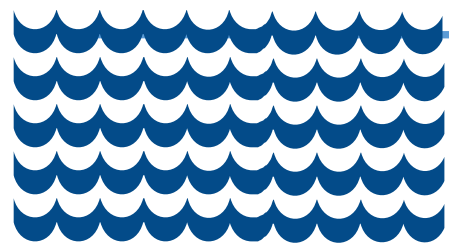
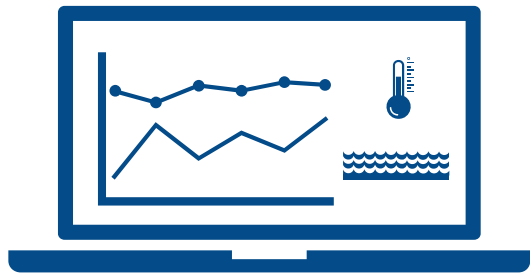


# Adaptation pathway for sea level rise

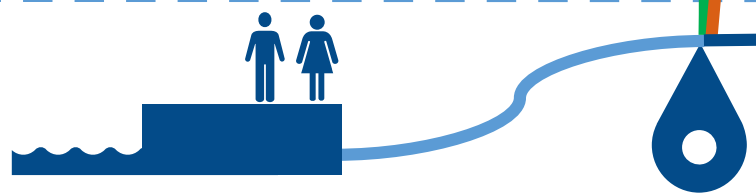




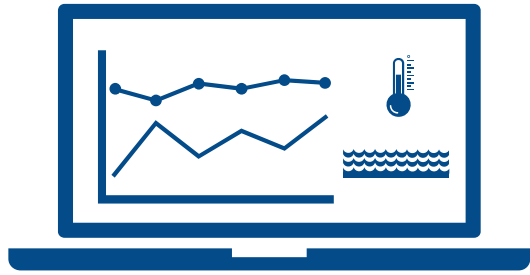




Sea level too high for current system



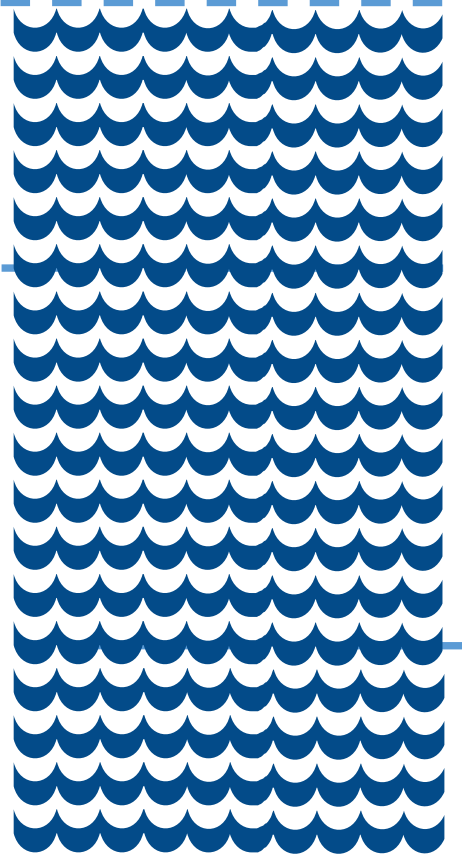
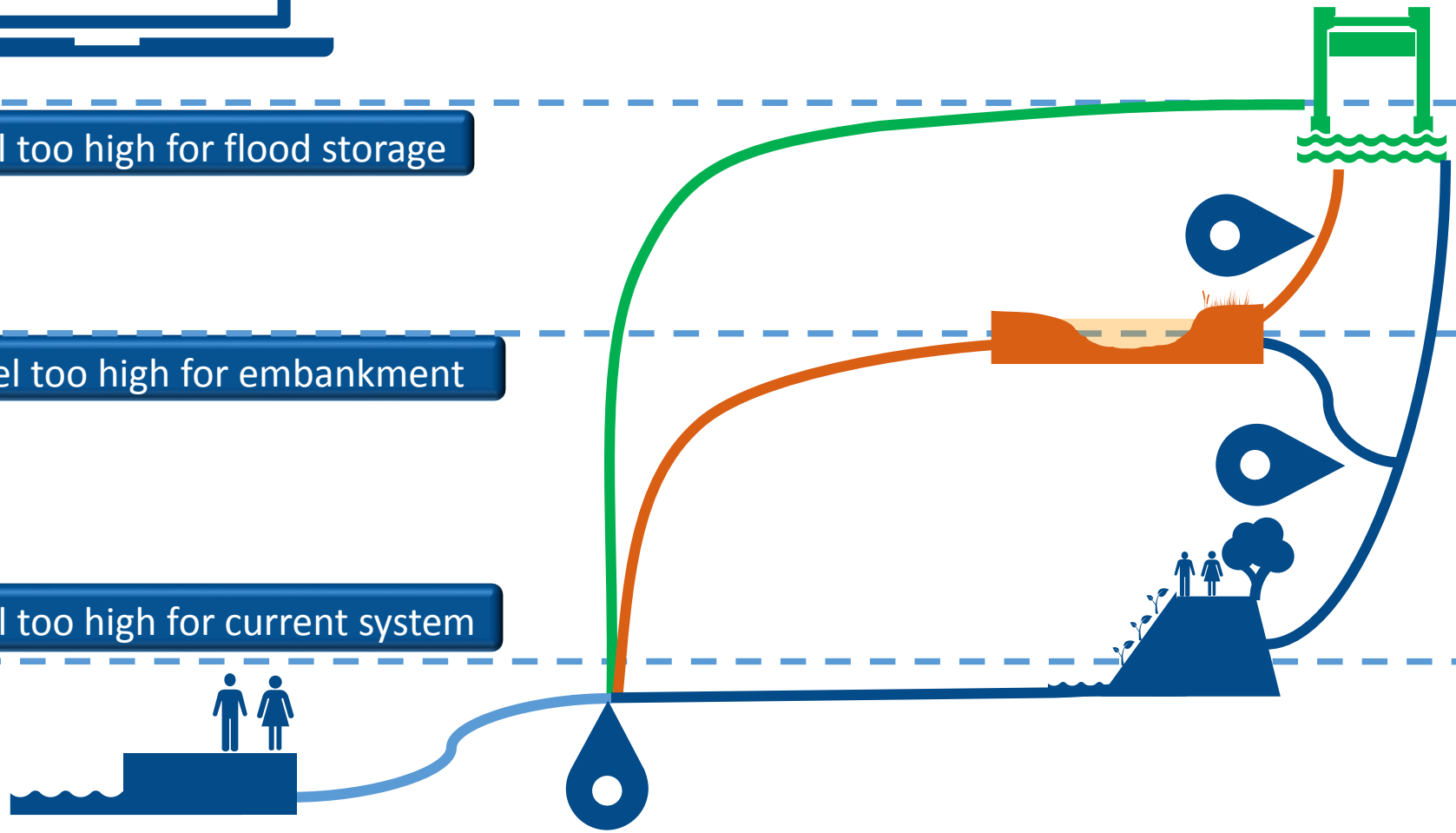




Sea level too high for flood storage

Sea level too high for embankment

Sea level too high for current system





Credit: National Police Air Service



Environment Agency

Thames Estuary 2100

Managing flood risk through London and the Thames estuary

TE2100 Plan

November 2012

