

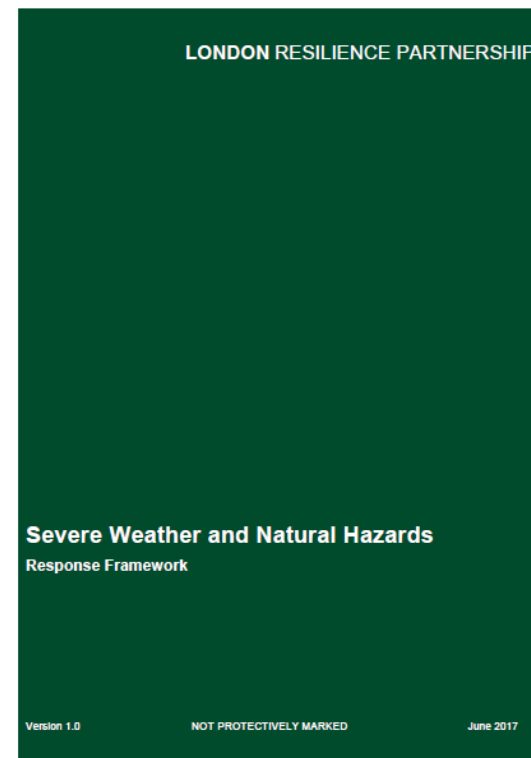
## London's Strategic Coordination Arrangements for a Heat Health Emergency

*18<sup>th</sup> June 2020*

*Fiona Mair, London Resilience Manager*

# Aim

*To discuss the London Response to a Heatwave incident during the ongoing COVID-19 Response*



# LONDON RESILIENCE

## Severe Weather and Natural Hazards Response Framework

# Aim

To provide strategic direction to London responders, before, during and after a range of weather types and natural phenomena which could significantly impact London

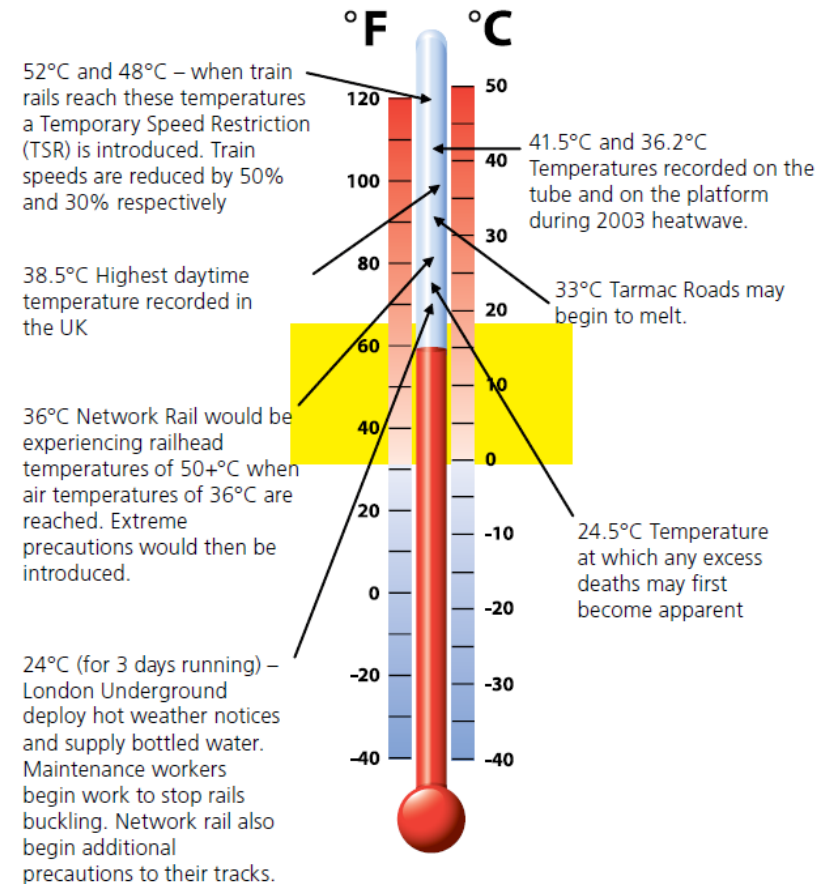
# Assumptions

*'All partners maintain their own emergency and BC plans which reflect the triggers and actions in this framework'*

[and in the Heatwave Plan for England]

- Appropriate action will be taken by frontline services
- In advance (long-term planning) and at all levels 0-4
- BaU arrangements will take care of;
  - long-term planning (level 0)
  - Heatwave and summer preparedness programme (level 1)

Trigger temperatures



# Activation triggers – Heat Health Alerts

Coordination / Trigger	Normal Operational Response	Partnership Teleconference	Strategic Coordination Group	Lead for Activation
Flood Guidance Statement	Green bar	Yellow bar	Orange bar	EA / Met Office
Flood Warning Service	Flood Alert (Green bar)	Flood Warning (Grey bar)	Severe Warning (Grey bar)	EA
NSWWS	Green bar	Yellow bar	Orange bar	Met Office
Drought	No Drought (Grey bar)	Developing Drought (Grey bar)	Drought (Grey bar)	EA
Air Quality	Low (Green bar)	Moderate (Yellow bar)	High (Red bar)	Defra / AirText
Daily Hazards Assessment (Space Weather/Volcanic Ash)	Green bar	Yellow bar	Orange bar	Met Office
Heat Health / Cold Weather	Level 1 (Green bar)	Level 2 (Yellow bar)	Level 3 (Orange bar)	Met Office/PHE
			Level 4 (Red bar)	

## Level 2: Prepare (heatwave is forecast day 32C, night 18C)

- Partners prepare and report any issues (impact, response) on LSAS
- Consider partnership teleconference, public comms etc.

## Level 3: Respond (heatwave action)

- Partnership teleconference, coordinate public comms, ID and support the vulnerable, impact assessment / COP

## Level 4: National Strategic response (Major Incident):

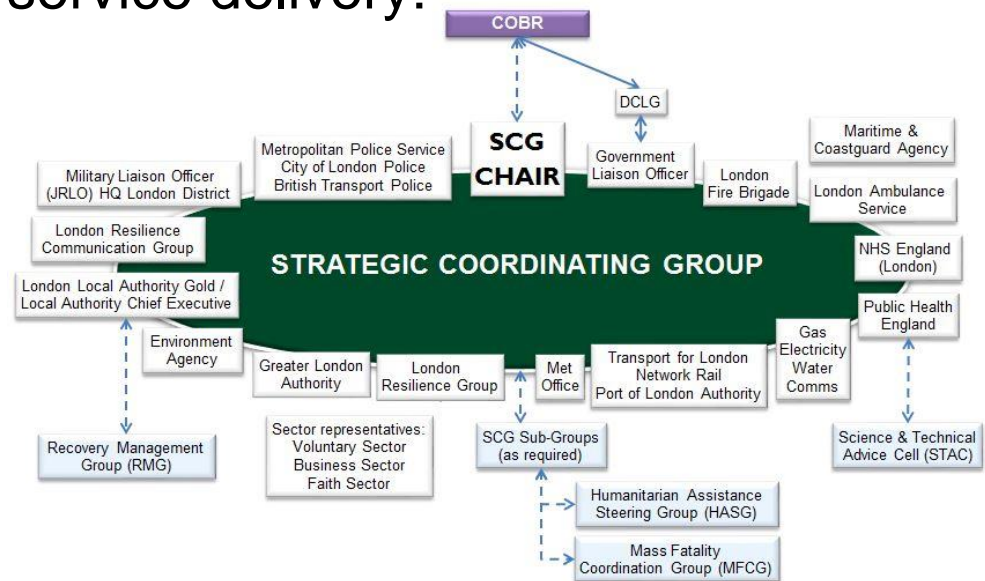
- Strat. Coord. Group (SCG)
- Consider activation of other capabilities (e.g. drought, flood)

# Monitoring and Impact Assessment

- PHE monitor data on health impacts from real-time syndromic surveillance systems
- Partners report on impacts and on their response operations:
  - Health and wellbeing (public and staff)
  - Environmental pollution – air and water
  - Air quality – complex relationship heat and air quality
  - Social disorder – sleep, stress, alcohol...
  - Transport infrastructure – roads, rails, other
  - Power supplies – increased demand
  - Water supplies – increased demand, concurrent drought
  - Wildfires
  - Delivery of critical services (incl. death management)

# A coordinated response

- SCG - strategy, priorities, decisions, direction (PHE Chair)
- Consequence management / service delivery:
  - Health and Social Care
  - Environmental response
  - Social cohesion / disorder
  - Transport
  - Utilities
  - Fire prevention & response
  - Voluntary, faith, business
  - Community resilience and facilities
- LRCG - public comms and advice (PHE Chair)



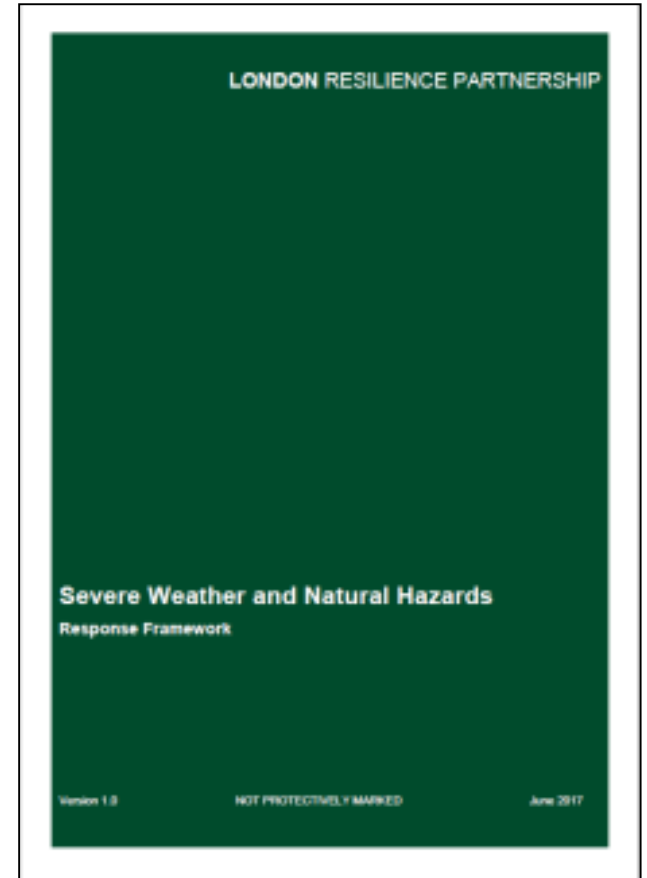


# LONDON RESILIENCE

Heat and COVID-19

# Planning

- Severe Weather and Natural Hazards Framework – due for review Feb 2020
- LRF agreed to delay with an approach to be agreed in October



# Response

- Within / alongside COVID-19?
- COVID-19 Coordination (SCG sub-groups)
  - Communications
  - Mortality Management
  - London Local Authority Strategic Coordination
  - Funders, Community and Voluntary Sector
  - Health and Social Care Oversight
  - Testing

# Questions?

**Fiona Mair**

**London Resilience Manager**

[Fiona.Mair@london-fire.gov.uk](mailto:Fiona.Mair@london-fire.gov.uk)

07388 370 439

[LondonResilience@london-fire.gov.uk](mailto:LondonResilience@london-fire.gov.uk)

[www.londonprepared.gov.uk](http://www.londonprepared.gov.uk)

## **LONDON RESILIENCE GROUP**

The London Resilience Group is jointly funded and governed by the Greater London Authority, London Local Authorities and the London Fire Commissioner.

We are hosted by the London Fire Brigade. Our work, and that of the London Resilience Partnership, is overseen by the London Resilience Forum.

**LONDON RESILIENCE**